



Juan Camilo Losada  
Vidarte

CENTURY 21

Oro Verde

ID: 111828  
gerente@c21oroverde.com.co  
+573232164569



## Offices for Sale

Apartadó, Urabá, Antioquia



Sale: \$330,000,000.00

Property type: Offices

Operation: Sale

- **Stratum:** 4
- **Land:** 47.4 sqm
- **Building:** 47.4 sqm
- **Bathrooms:** 2
- **Stories:** 5
- **Kitchen:** Kitchenette
- **Land:** irregular
- **Condition:** New
- **Land Use:** Commercial
- **Number of Elevators:** 1
- **Floor number:** 5
- **Construction Quality:** High
- **environments:** 3

- Disabled access
- Uncovered parking

- Business office
- Reception

- Finishes: AAA

- Structure Type: Metalica

- Thermal isolation
- Visitors Parking

- Shopping area
- Build style: Moderno

- Windows: Aluminio gris

- Cover Type: Loza tecnica

- Elevator
- Goal

- Nearby parks
- Construction status: Alta

- Doors and Closets: Madera

- Smoke detector
- Air conditioning pre-installation
- Paved Access
- Profitable Construction Area: 159
- Type of Walls: Bloques Concreto

## Property status

State: New

Age: 2022

Without Mortgage: Yes

---

## Description

A GREAT OPPORTUNITY! Get to know the best investment and financing option in Urabá Antioquia, CONFIAR mixed building in Apartadó, Antioquia, a project with 5 stories high and a total built area of 1642.69 m2, former corner of the RCN radio station. Composed of deep foundations and a metal base structure, its main component is an anchor location: The main offices of the CONFIAR Cooperative, distributed on floors 1 and 2.

A project with 5 stories high and a total built area of 1642.69 m2, former corner of the RCN station. Composed of deep foundations and a metal base structure, its main component is an anchor location: The main offices of the CONFIAR Cooperative, distributed on floors 1 and 2.

It is delivered with aqueduct and sewage networks up to the point of outlets of elements without sanitary equipment or furniture. The electrical outlets are delivered with wiring and devices in accordance with compliance with the RETIE and lighting outlets. The facades, glass doors and windows will be delivered according to the space distribution specifications in the architectural plans. The floor is delivered up to the level of the unfinished concrete structure. The enclosures of common areas in unfinished concrete block masonry, with exposed concrete structural screens and access door to the premises in wood carpentry.

Fixed points and common areas

Finished in floors with veneer, walls and ceilings finished in stucco and paint, with lighting.

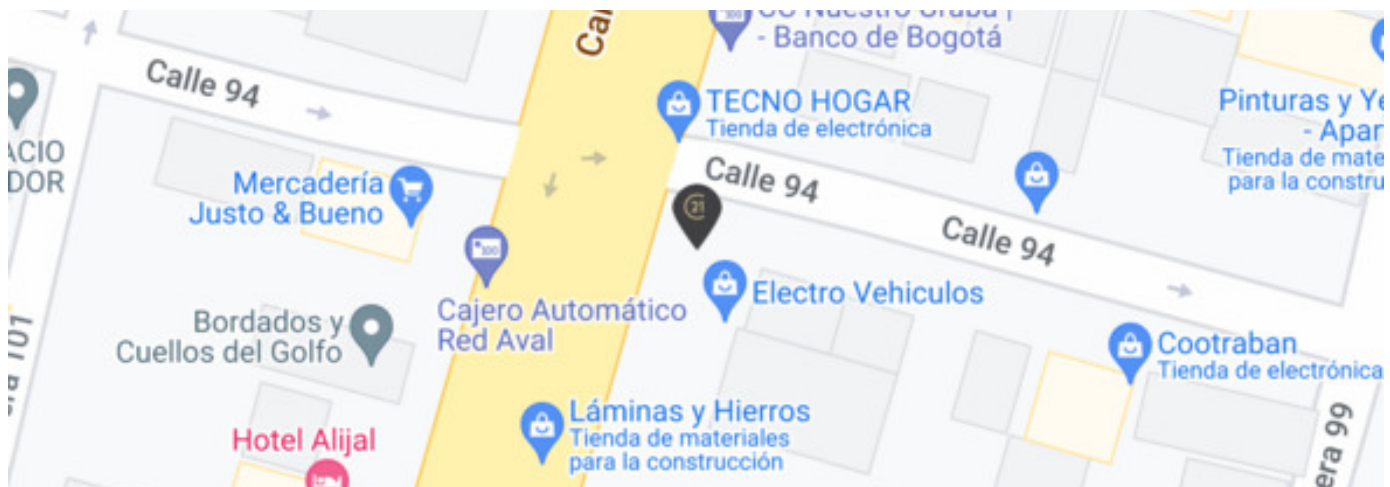
One (1) OTIS brand elevator with a capacity of 4 passengers with stops on each floor. Main pedestrian access with space for a goal with a bathroom with exits and devices. A pump room for the drive system of the building's aqueduct network, metallic structure pedestrian stairs and network vultures on each floor.

---

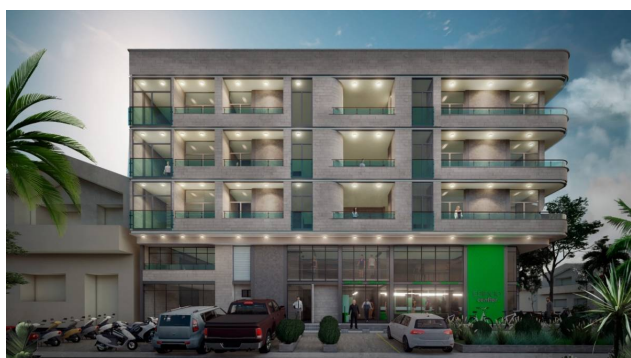
## Location

Apartadó, Urabá, Antioquia

## References



## Photo Catalog



**Carrera 102 # 98-09, Barrio Ortíz., Apartadó, Urabá, Antioquia**  
**T 6048150647 | [info@c21oroverde.com.co](mailto:info@c21oroverde.com.co) | [www.c21oroverde.com](http://www.c21oroverde.com)**

Property subject to availability.

Price subject to change without notice.

The sending of this file does not commit the parties to the subscription of any legal document. The information and measurements are approximate and must be confirmed with the relevant documentation.