



Juan Camilo Losada
Vidarte

CENTURY 21.

Oro Verde

ID: 111832
gerente@c21oroverde.com.co
+573232164569



Offices for Sale

Apartadó, Urabá, Antioquia



Sale: \$780,000,000.00

Property type: Offices

Operation: Sale

- **Stratum:** 4
- **Land:** 127.4 sqm
- **Building:** 127.4 sqm
- **Half Baths:** 1
- **Kitchen:** Kitchenette
- **Land:** regular
- **Condition:** New
- **Land Use:** Commercial
- **Number of Elevators:** 1
- **Floor number:** 5
- **Construction Quality:** High
- **environments:** 3

- Disabled access
- Uncovered parking

- Thermal isolation
- Visitors Parking

- Elevator
- Goal

- Smoke detector
- Air conditioning pre-installation

- Business office
- Reception

- Shopping area
- Build style: Moderno

- Nearby parks
- Construction status: Alta

- Paved Access
- Profitable Construction Area: 159

- Finishes: AAA

- Windows: Aluminio gris

- Doors and Closets: Madera

- Type of Walls: Bloques Concreto

- Structure Type: Metalica

- Cover Type: Loza tecnica

Property status

State: New

Age: 2022

Without Mortgage: Yes

Description

A GREAT OPPORTUNITY! Learn about the best investment and financing option in Urabá Antioquia, acquiring an office in the CONFIAR mixed building in Apartadó, Antioquia. Whether for your own headquarters or to invest in profitability, this project offers the opportunity to capitalize your investment in the long term, this being a project with a high degree of projected valuation due to its strategic and privileged location.

It is a 5-story building with a total constructed area of 1,642.69 m², it has an anchor premises that will be the new headquarters of the CONFIAR Cooperative on the first two levels, and 13 premises and offices distributed among its 5 levels.

It is located on the entire main avenue of the municipality (National Trunk), on the old corner of the RCN station.

It is delivered with aqueduct and sewage networks to the point of departure of elements without sanitary equipment or furniture. The power outlets are delivered with wiring and devices in compliance with RETIE and lighting outlets. The glass facades, doors and windows will be delivered according to the space distribution specifications in the architectural plans. The floor is delivered up to the level of the unfinished concrete structure. The enclosures of common areas in unfinished concrete block masonry, with exposed concrete structural screens and access door to the premises in wooden carpentry.

Fixed points and common areas: Floor finishes with veneer, walls and ceilings finished with stucco and paint, with lighting.

Location

Apartadó, Urabá, Antioquia

References

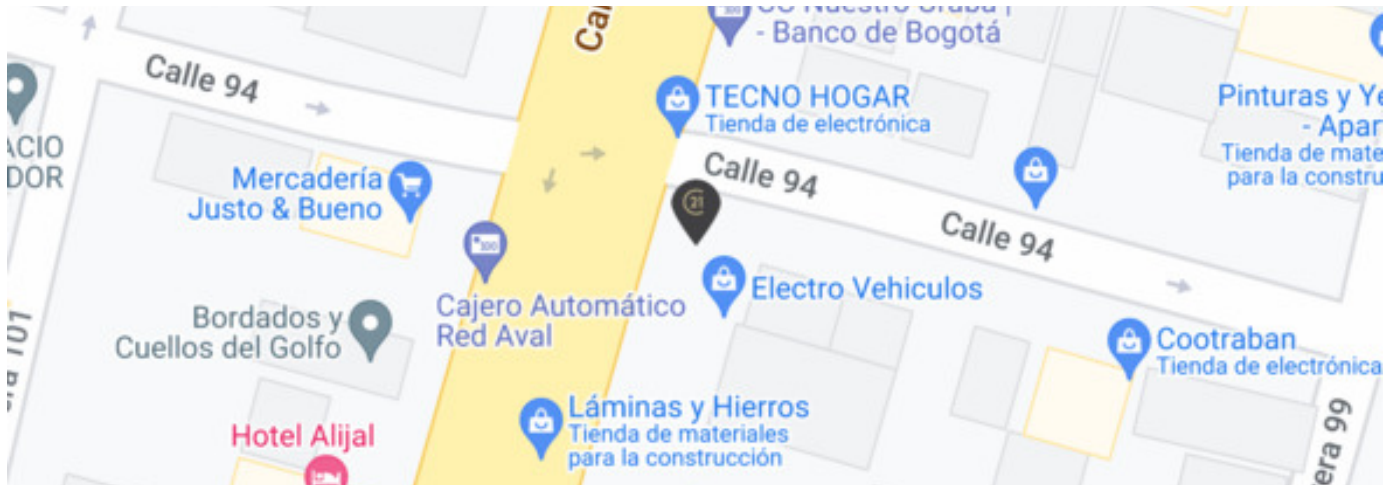
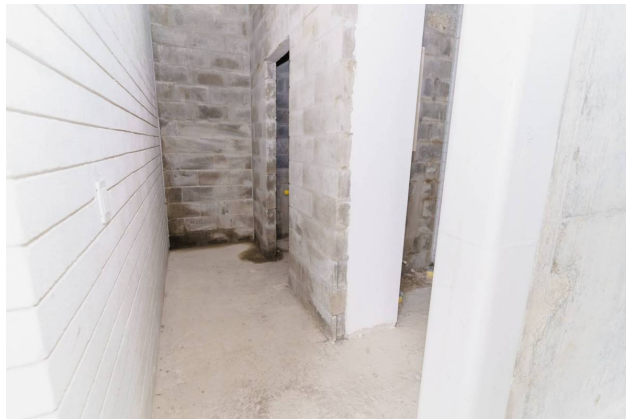


Photo Catalog





Carrera 102 # 98-09, Barrio Ortíz., Apartadó, Urabá, Antioquia
T 6048150647 | info@c21oroverde.com.co | www.c21oroverde.com

Property subject to availability.

Price subject to change without notice.

The sending of this file does not commit the parties to the subscription of any legal document. The information and measurements are approximate and must be confirmed with the relevant documentation.