



Juan Camilo Losada
Vidarte

CENTURY 21.

Oro Verde

ID: 114439

gerente@c21oroverde.com.co

+573232164569

confiar
coop



LOCAL 1er. PISO:

159,19 m²

Retail for Rent

Apartadó, Urabá, Antioquia



Rent: \$10,188,160.00

Property type: Locale

Operation: Rent

- **Stratum:** 4
- **Land:** 159.2 sqm
- **Building:** 159.2 sqm
- **Stories:** 5
- **Kitchen:** Kitchenette
- **Land:** irregular
- **Condition:** New
- **Land Use:** Commercial
- **Number of Elevators:** 1
- **Floor number:** 1
- **Construction Quality:** High
- **Floor Type:** Bloque concreto

- Disabled access
- Uncovered parking

- Thermal isolation
- Visitors Parking

- Elevator
- Goal

- Smoke detector
- Air conditioning pre-installation

- Business office
- Reception

- Shopping area
- Build style: Moderno

- Nearby parks
- Construction status: Alta

- Paved Access
- Profitable Construction Area: 159

- Finishes: AAA

- Windows: Aluminio gris

- Doors and Closets: Madera

- Type of Walls: Bloques Concreto

- Structure Type: Metalica

- Cover Type: Loza tecnica

Property status

State: New

Age: 2022

Without Mortgage: Yes

Description

A GREAT OPPORTUNITY! Get to know the best rental option in Urabá Antioquia, CONFIAR mixed building in Apartadó, Antioquia, a project with 5 stories high and a total built area of 1642.69 m², former corner of the RCN radio station, which has a local of 159 meters, on the first level.

The building is made up of deep foundations and a metal base structure, its main component is an anchor location: The main offices of the CONFIAR Cooperative, distributed on floors 1 and 2.

It is delivered with aqueduct and sewage networks up to the point of outlets of elements without sanitary equipment or furniture. The electrical outlets are delivered with wiring and devices in accordance with compliance with the RETIE and lighting outlets. The facades, glass doors and windows will be delivered according to the space distribution specifications in the architectural plans. The floor is delivered up to the level of the unfinished concrete structure. The enclosures of common areas in unfinished concrete block masonry, with structural screens in exposed concrete and access door to the premises in wood carpentry.

Fixed points and common areas

Finished in floors with veneer, walls and ceilings finished in stucco and paint, with lighting.

Main pedestrian access with space for a goal with a bathroom with exits and devices. A pump room for the drive system of the building's aqueduct network, metallic structure pedestrian stairs and network vultures on each floor.

Location

Apartadó, Urabá, Antioquia

References

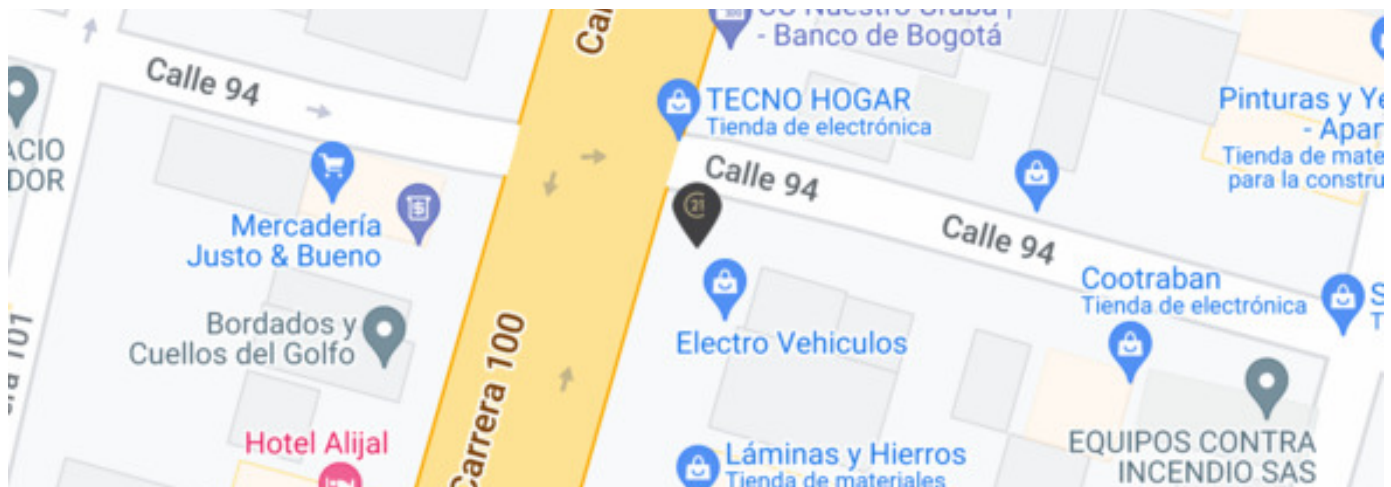
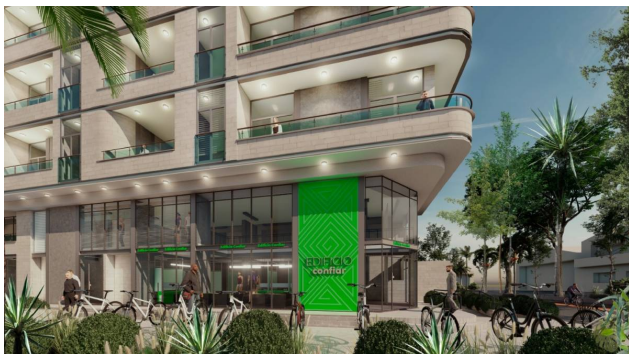


Photo Catalog







Carrera 102 # 98-09, Barrio Ortíz., Apartadó, Urabá, Antioquia
T 6048150647 | info@c21oroverde.com.co | www.c21oroverde.com

Property subject to availability.

Price subject to change without notice.

The sending of this file does not commit the parties to the subscription of any legal document. The information and measurements are approximate and must be confirmed with the relevant documentation.