



Alejandra Peláez Ochoa

CENTURY 21.

Radial

ID: 117993  
apelaez@century21radial.com  
+573122882976



### House for Rent

El Retiro, Medellín, Antioquia



Rent: \$20,000,000.00

Property type: Home

Operation: Rent

- **Stratum:** 5
- **Land:** 8,098.0 sqm
- **Building:** 545.0 sqm
- **Bedrooms:** 4
- **Bathrooms:** 5
- **Half Baths:** 1
- **Parking lots:** 10
- **Stories:** 2
- **Kitchen:** Full kitchen
- **Construction Quality:** Middle - High
- **Floor Type:** Porcelanato

- |                    |                           |                |                              |
|--------------------|---------------------------|----------------|------------------------------|
| • Pets Allowed     | • Furnished               | • Balcony      | • Fireplace                  |
| • Visitors Parking | • Electric door           | • Septic tank  | • Social room                |
| • BBQ terrace      | • Service Alcove          | • Yard         | • Parkland                   |
| • Study Room       | • Hall of Alcoves         | • Laundry area | • Country Zone               |
| • Residential area | • Supermarkets / C.Ciales | • Paved Access | • 24 * 7 private surveillanc |
| • Workers house    | • Terrace                 |                |                              |

### Property status

Age: 2008

Without Mortgage: Yes

## Description

Rent beautiful country house in Fizebad sector subdivision, spacious, modern, fresh and illuminated, with a large native forest around it, the house has 2 levels, on the first level we find 2 living rooms with fireplace, a large dining room 1 bedroom with bathroom and a deck with a beautiful green view, a very spacious kitchen, with a separate laundry area. On the second level there are 3 bedrooms each with a bathroom, the main one with a walk-in closet, gas fireplace, a TV area and a large balcony.

On the outside we find an employee house, with bathroom and kitchenette, a useful room, a mixed room, with bathroom, for meetings or as a covered parking for 3 cars, 10 parking spaces for visitors, green area and a large soccer field, gate electric.

The subdivision has 2 gatekeepers 24/7, guards, camera system, social room and tennis court.

It is 30 minutes from Medellín, 15 minutes from the Retiro and the ease of reaching the airport in 30 minutes, with the ease of finding supermarkets, pharmacies, a church and a wide variety of restaurants and recreation sites nearby.

---

## Location

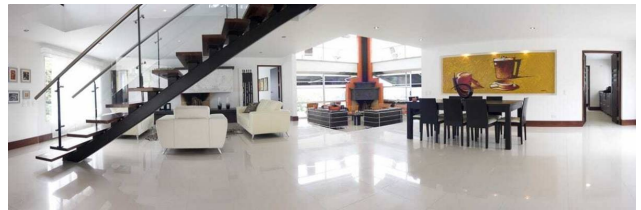
El Retiro, Medellín, Antioquia

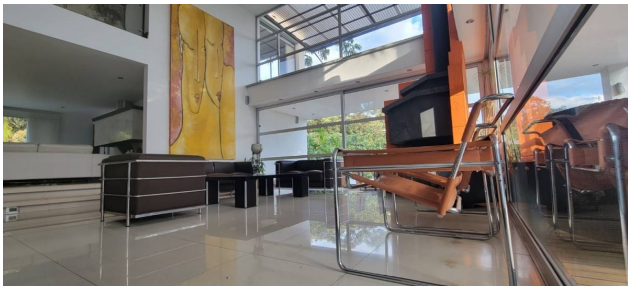
## References



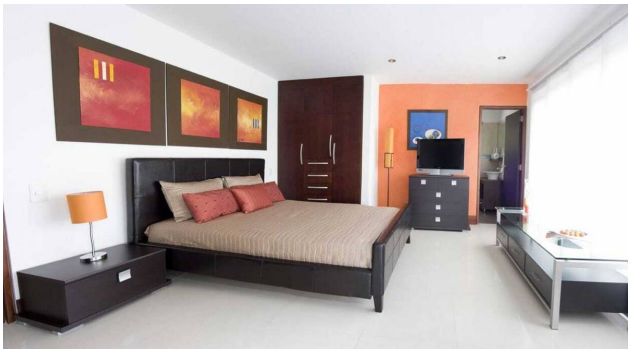
---

## Photo Catalog









Property subject to availability.

Price subject to change without notice.

The sending of this file does not commit the parties to the subscription of any legal document. The information and measurements are approximate and must be confirmed with the relevant documentation.