



Tatiana Henao Pérez

CENTURY 21.

Radial

ID: 122236
tatiana@century21radial.com
+573136509176



House for Sale

El Poblado, Medellín, Antioquia



Sale: \$4,450,000,000.00

Maintenance : \$1,066,782

Property type: Home

Operation: Sale

- **Stratum:** 6
- **Land:** 3,300.0 sqm
- **Building:** 550.0 sqm
- **Bedrooms:** 4
- **Bathrooms:** 6
- **Parking lots:** 5
- **Stories:** 2
- **Kitchen:** Full kitchen
- **Land:** irregular
- **Condition:** Very good
- **Number Of Houses:** 74
- **Construction Quality:** High
- **Showers:** 3
- **environments:** 3

- Pool
- Central air conditioner
- Surveillance cameras
- Goal
- Service Alcove
- Playroom
- Hall of Alcoves
- Installation of gas
- Colleges / Universities
- Paved Access
- Dinning Room

- Pets Allowed
- Balcony
- Deposit
- Electric door
- Bath Service
- Garaje(s)
- Panoramic view
- Laundry area
- Trans. Close public
- Goal / Surveillance
- 24 * 7 private surveillanc

- Disabled access
- BBQ
- Covered parking
- Surveillance Service
- In a closed set
- Auxiliary bathroom
- American style bar
- Country Zone
- 24x7 surveillance
- All the services
- In condominium

- Hot water
- Bar
- Private pool
- BBQ terrace
- Courtyard
- Study Room
- American kitchen
- Residential area
- Pantry
- Covered Garage
- Ecological routes

• Pan one side

• Outdoor gardens

Property status

State: Very good

Age: 2007

Description

This country house located a few minutes from the city on Vía Las Palmas, offers you a quiet and natural environment without straying too far from urban comforts. With 4 rooms + service, it offers enough space for the whole family and friends. In addition, it has a library and a family room, where you can relax and enjoy moments of entertainment. The terrace offers a view of the city, allowing you to enjoy beautiful sunrises and sunsets. The large garden invites you to connect with nature, while the pool offers you a refreshing option for sunny days that are enjoyed outdoors, the bbq area is perfect for family and friends gatherings. In summary, this country house combines the best of both worlds: the tranquility of the countryside and the comfort of the city.

Option of a continuous lot to expand the green area or additional construction

Location

El Poblado, Medellín, Antioquia

References

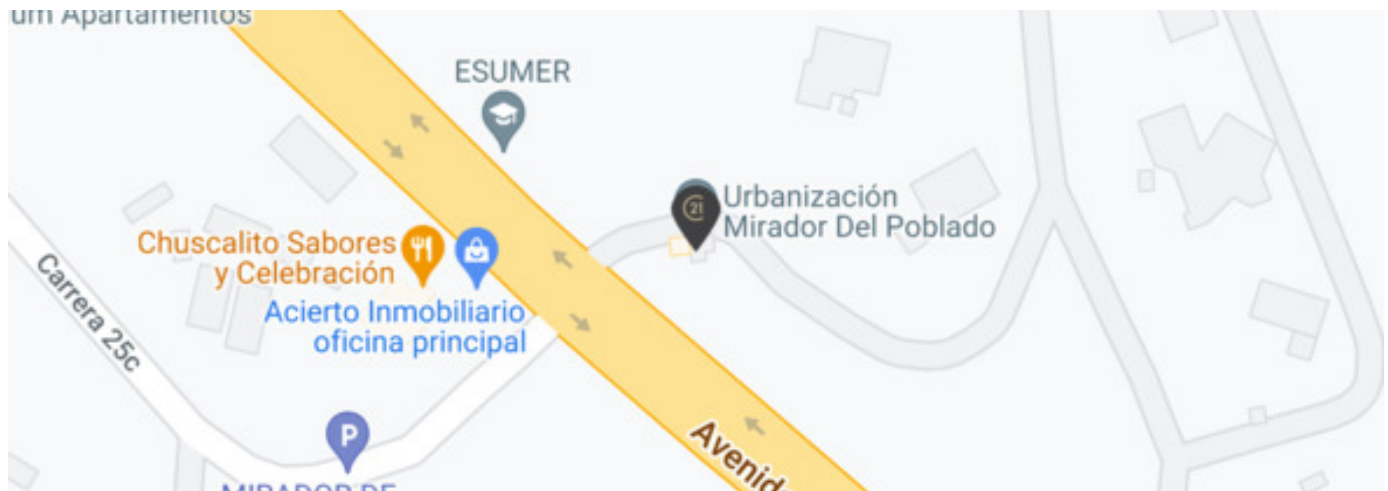
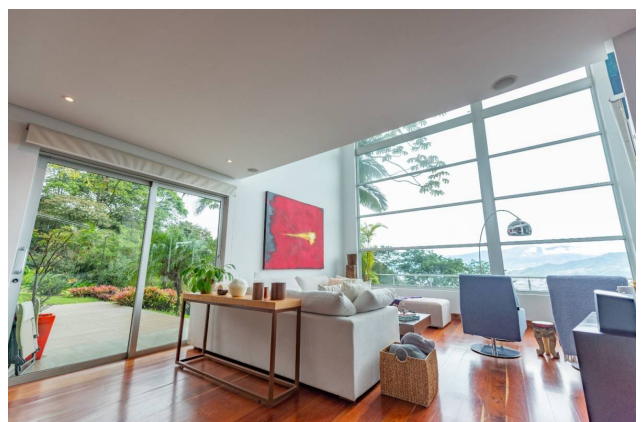
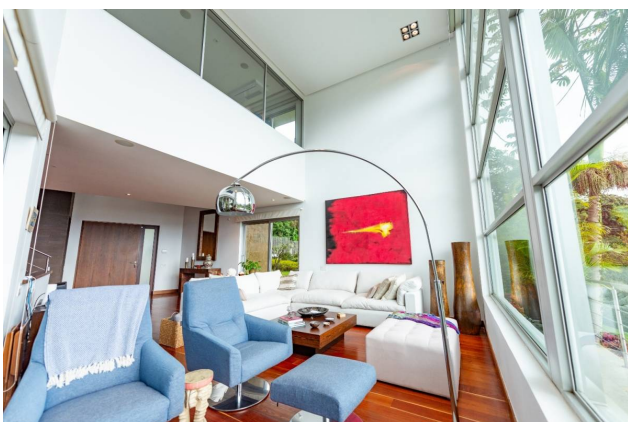
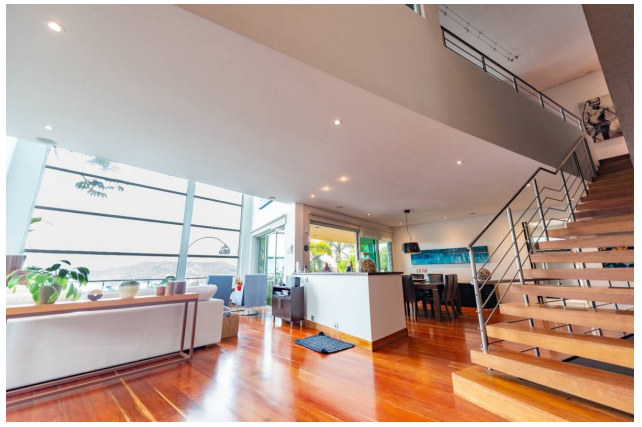
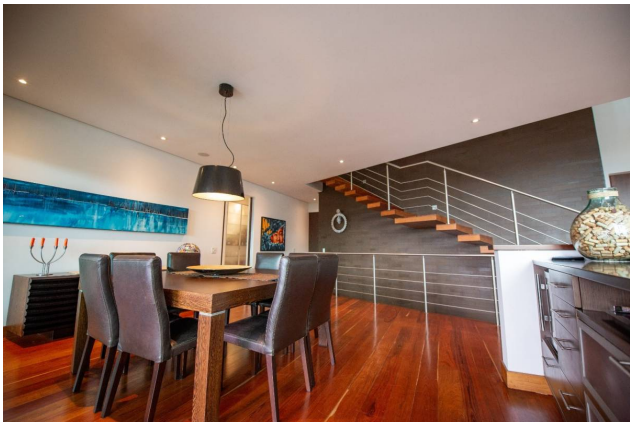


Photo Catalog









Calle 20 Sur # 27-55, Medellín, Medellín, Antioquia
T 6045898666 | gerencia@century21radial.com | www.century21radial.com

Property subject to availability.

Price subject to change without notice.

The sending of this file does not commit the parties to the subscription of any legal document. The information and measurements are approximate and must be confirmed with the relevant documentation.