



Juliana Zapata Arango

CENTURY 21

Radial

ID: 122559
jzapata@century21radial.com
+573117700918



Land for Sale

Rionegro, Rionegro, Antioquia



Sale: \$1,150,000,000.00

Property type: Land

Operation: Sale

- **Stratum:** 5
- **Land:** 2,132.0 sqm
- **Building:** 2,132.0 sqm
- **Condition:** New
- **Number Of Houses:** 132

- | | | | |
|---------------------|----------------------------|---------------------------|------------------------|
| • Pets Allowed | • Disabled access | • Hot water | • Closed circuit TV |
| • Visitors Parking | • Goal | • Electric door | • Manual gate |
| • Automatic door | • Social room | • Concierge service | • Surveillance Service |
| • Panoramic view | • Country Zone | • Colleges / Universities | • Trans. Close public |
| • Nearby parks | • Fruit trees | • Empty Lot | • Rural area |
| • Cornerback | • With administrator | • Construction Lic. | • In condominium |
| • Ecological routes | • Close to shopping center | • Sewerage | • Wi fi availability |
| | | • Air washer | • Level Parking |

Property status

State: New

Age: 2022

Description

Lot for sale in Rionegro- Antioquia, El Tablazo sector, located in an exclusive project that seeks to give you the feeling and experience of living in a large nature reserve, it is 20 minutes from the Oriente tunnel, it has all the underground networks , two entry gates to the condominium, meeting room and a large deck that gives you a wonderful view of a lake. Its location is strategic close to shopping centers, schools, supermarkets, nurseries, in short, a wonderful space for you and your whole family. I'd love to show you

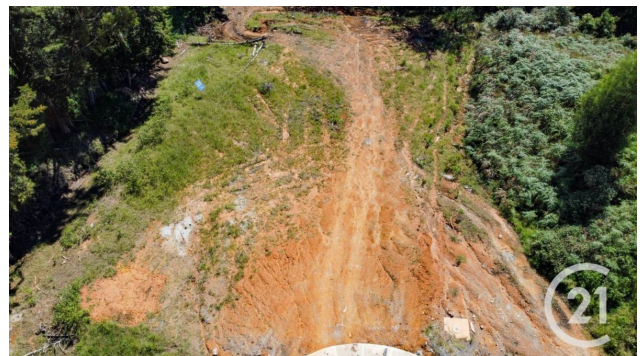
Location

Rionegro, Rionegro, Antioquia

References



Photo Catalog



Calle 20 Sur # 27-55, Medellín, Medellín, Antioquia
T 6045898666 | gerencia@century21radial.com | www.century21radial.com

Property subject to availability.

Price subject to change without notice.

The sending of this file does not commit the parties to the subscription of any legal document. The information and measurements are approximate and must be confirmed with the relevant documentation.

