



Tatiana Henao Pérez

CENTURY 21.

Radial

ID: 123611
tatiana@century21radial.com
+573136509176



Condominium for Sale

El Poblado, Medellín, Antioquia



Sale: \$1,701,905,807.00

Maintenance : \$500,000

Property type: Condominium

Operation: Sale

- **Stratum:** 6
- **Land:** 143.0 sqm
- **Building:** 143.0 sqm
- **Bedrooms:** 3
- **Bathrooms:** 4
- **Half Baths:** 1
- **Parking lots:** 2
- **Stories:** 1
- **Kitchen:** Full kitchen
- **Land:** regular
- **Condition:** New
- **Number of Elevators:** 2
- **Floor number:** 2
- **Construction Quality:** Luxury
- **Showers:** 3
- **environments:** 3

- Pool
- Balcony
- Visitors Parking
- Yard
- Country Zone

- Pets Allowed
- Closed circuit TV
- Climatized pool
- In a closed set
- 24x7 surveillance

- Disabled access
- Gym
- Goal
- Integral kitchen
- 24 * 7 private surveillanc

- Elevator
- Childish games
- Surveillance Service
- Panoramic view

Property status

State: New

Age: 2023

Description

The Contree Las Palmas Apartments offer you a place where perfection is fully integrated into your lifestyle. In this space, you will be able to enjoy spacious and cozy environments while you fall in love with a unique environment that stands out for its striking and distinctive architecture.

Located in an extremely privileged position in Medellín, just on the outskirts of the city on Las Palmas avenue, these apartments are close to the Oriente tunnel, which gives you the possibility of reaching the José María Córdova airport in just 10 minutes . In addition, its strategic location allows convenient access to El Poblado, one of the most iconic places in the city, through multiple access roads that take you there in just 5 minutes.

This environment allows you to live your way, enjoying a natural and serene environment that invites you to relax and disconnect from the urban rhythm. Every corner of these apartments has been designed with your comfort and well-being in mind. From the impressive lobby to the meeting rooms and independent work spaces, everything has been designed to meet your needs and lifestyle.

The common areas are a fundamental part of the experience at Contree Las Palmas. Imagine having access to a Social Kitchen where you can share culinary moments, a Wet Area that includes a solarium, jacuzzi, sauna and Turkish bath to revitalize yourself, as well as a children's play area for the little ones and a gym to keep your health in optimal conditions. . In addition, the Wellness Zone, which includes a terrace with a BBQ area, a space for meditation and yoga practice, gives you a space to find balance and harmony.

In short, Contree Las Palmas Apartments not only give you a place to live, but a complete living experience. From its strategic location to its carefully designed spaces, they offer you the opportunity to enjoy a sophisticated lifestyle in the midst of a natural and peaceful environment.

Location

El Poblado, Medellín, Antioquia

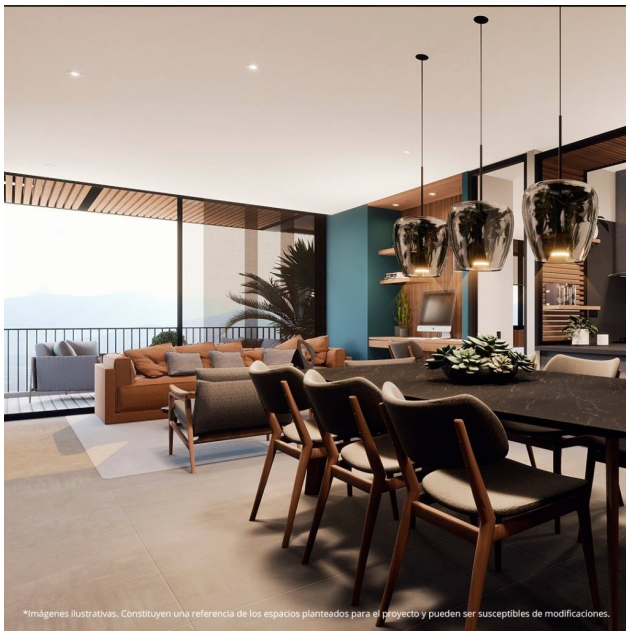
References



Photo Catalog



*Imágenes ilustrativas. Constituyen una referencia de los espacios planteados para el proyecto y pueden ser susceptibles de modificaciones.



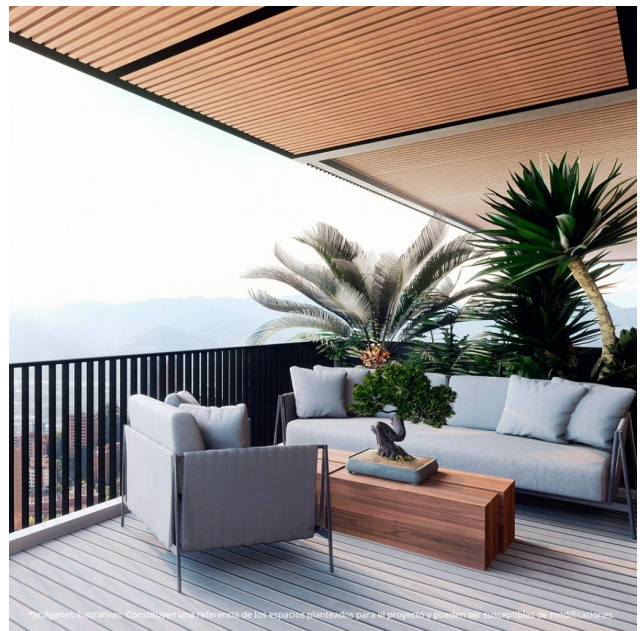
*Imágenes ilustrativas. Constituyen una referencia de los espacios planteados para el proyecto y pueden ser susceptibles de modificaciones.



*Imágenes ilustrativas. Constituyen una referencia de los espacios planteados para el proyecto y pueden ser susceptibles de modificaciones.



*Imágenes ilustrativas. Constituyen una referencia de los espacios planteados para el proyecto y pueden ser susceptibles de modificaciones.



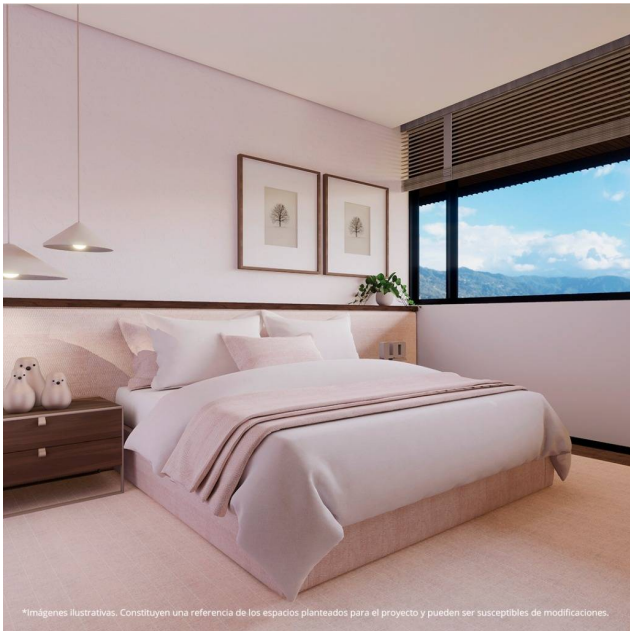
*Imágenes ilustrativas. Constituyen una referencia de los espacios planteados para el proyecto y pueden ser susceptibles de modificaciones.



*Imágenes ilustrativas. Constituyen una referencia de los espacios planteados para el proyecto y pueden ser susceptibles de modificaciones.



*Imágenes ilustrativas. Constituyen una referencia de los espacios planteados para el proyecto y pueden ser susceptibles de modificaciones.



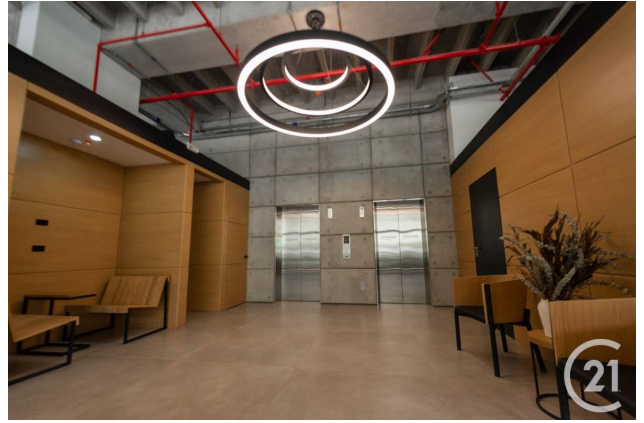
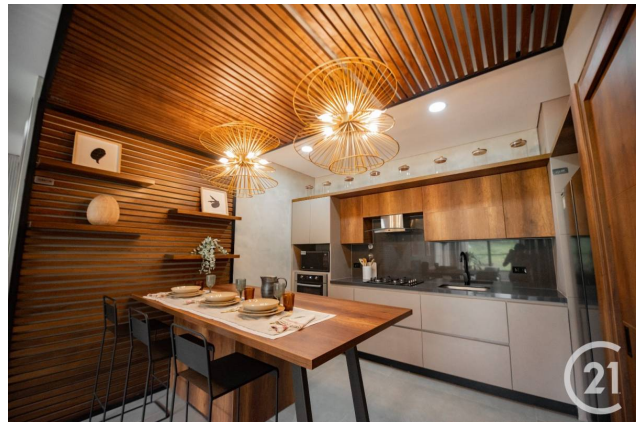
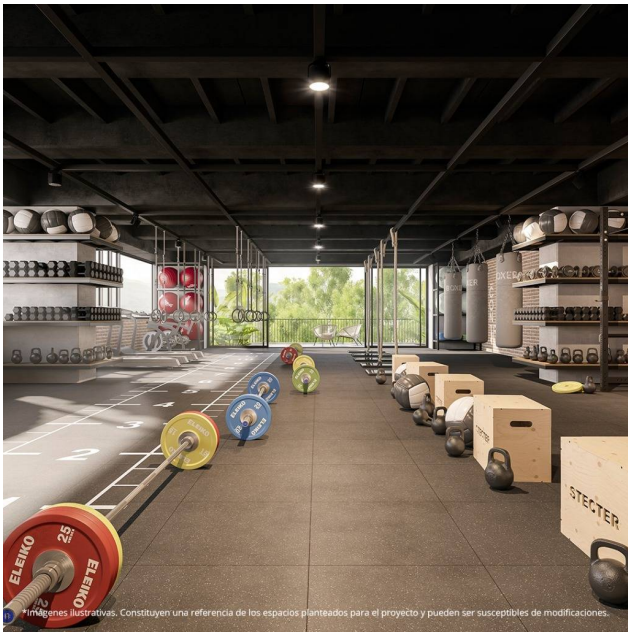
*Imágenes ilustrativas. Constituyen una referencia de los espacios planteados para el proyecto y pueden ser susceptibles de modificaciones.

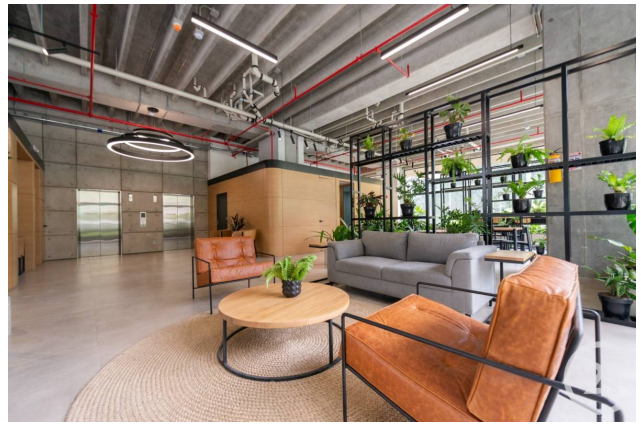


*Imágenes ilustrativas. Constituyen una referencia de los espacios planteados para el proyecto y pueden ser susceptibles de modificaciones.



*Imágenes ilustrativas. Constituyen una referencia de los espacios planteados para el proyecto y pueden ser susceptibles de modificaciones.





Calle 20 Sur # 27-55, Medellín, Medellín, Antioquia
T 6045898666 | gerencia@century21radial.com | www.century21radial.com

Property subject to availability.

Price subject to change without notice.

The sending of this file does not commit the parties to the subscription of any legal document. The information and measurements are approximate and must be confirmed with the relevant documentation.