



Edwin Angel

**CENTURY 21**

Nuevo Sur Inmobiliaria

ID: 124959

gerenciacomercial@c21nuevosur.com

+573014462199



**Condominium for Sale**

Calle 12A #36a-35 1001, El Poblado, Medellín, Antioquia



**Sale: \$1,250,000,000.00**

**Maintenance : \$427,000**

**Property type: Condominium**

**Operation: Sale**

- **Stratum:** 6
- **Land:** 124.0 sqm
- **Building:** 124.0 sqm
- **Bedrooms:** 3
- **Bathrooms:** 4
- **Parking lots:** 1

- Pool
- Turkish bath
- Gym
- Goal
- Yard
- Garaje(s)
- Panoramic view
- On main road
- Trans. Close public
- Paved Access
- In residential area

- No Pets Allowed
- Central heater
- Childish games
- Social room
- Tile / Marble Floor
- Multifamily Housing
- Cytophone
- Country Zone
- Nearby parks
- Near Urban Zone
- Retail

- Elevator
- Closed circuit TV
- Visitors Parking
- Sauna
- Integral kitchen
- Auxiliary bathroom
- Installation of gas
- Shopping area
- 24x7 surveillance
- Fruit trees

- Balcony
- Deposit
- Private pool
- Squash court
- Parkland
- Hall of Alcoves
- Laundry area
- Colleges / Universities
- Pantry
- Closet

**Property status**

Age: 1

Without Mortgage: Yes

## Description

Floor 10. It has 3 bedrooms, 4 bathrooms, kitchen, dining room with fountain, elevator and heater. Double linear parking, and useful room. Complete unit, social room, swimming pool for adults and children, gym, children's games, Turkish, sauna, 24-hour concierge. squash court Good integrated transport routes

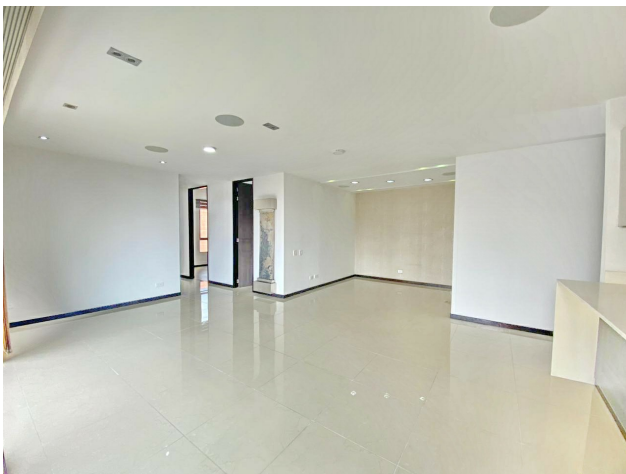
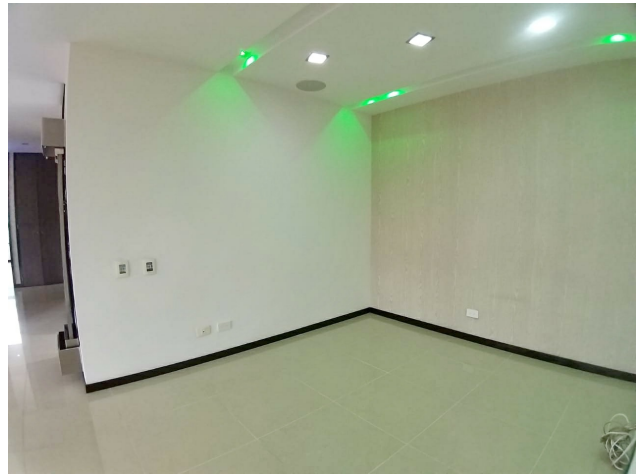
## Location

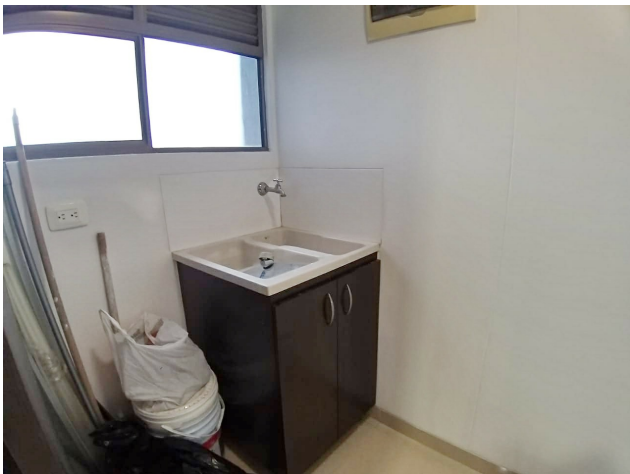
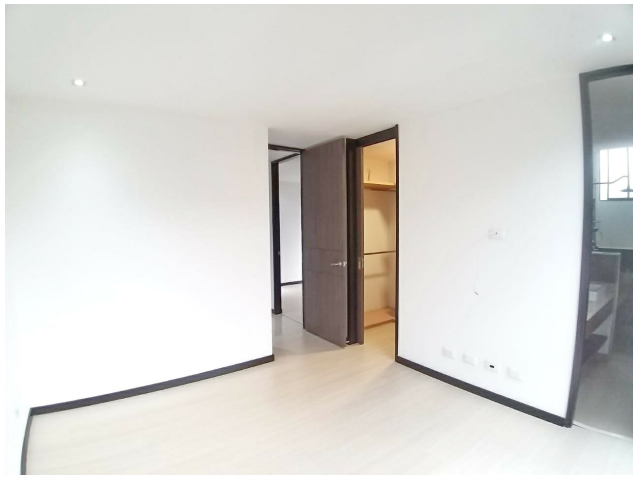
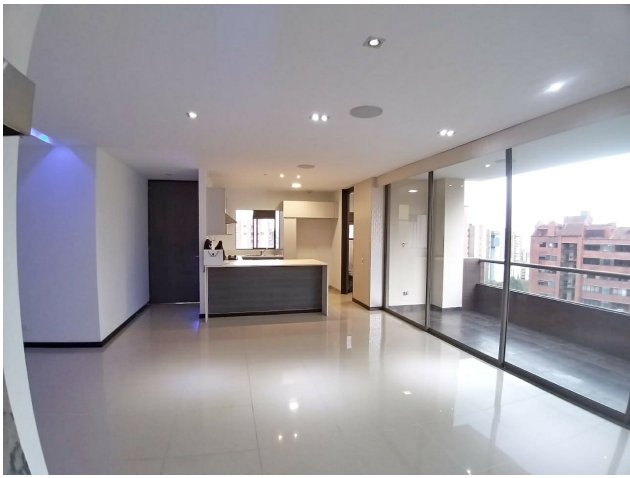
Calle 12A #36a-35 1001, El Poblado, Medellín, Antioquia

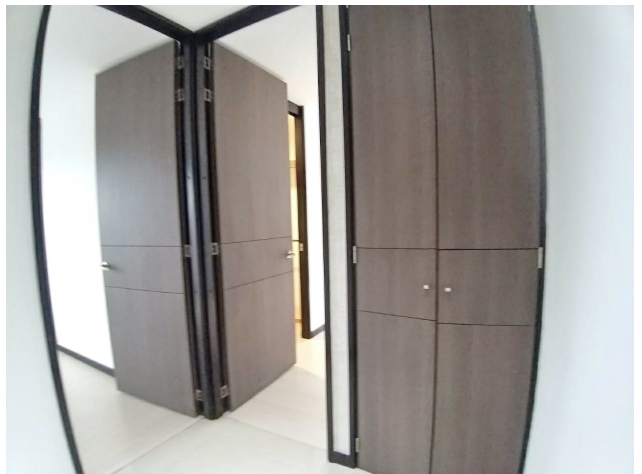
## References



## Photo Catalog









**Carrera 43B # 34 Sur - 54,Envigado, Envigado, Antioquia**  
**T 6043224170 | [gerencia@c21nuevosur.com](mailto:gerencia@c21nuevosur.com) | [www.c21nuevosur.com](http://www.c21nuevosur.com)**

Property subject to availability.

Price subject to change without notice.

The sending of this file does not commit the parties to the subscription of any legal document. The information and measurements are approximate and must be confirmed with the relevant documentation.