



**Ubeimar Ossa
Cano**

CENTURY 21.

La Heredad

ID: 125309
ubeimarossa@century21laheredad.com
+573173686197



Condominium for Sale

La Doctora, Sabaneta, Antioquia



Sale: \$290,000,000.00

Maintenance : \$100,000

Property type: Condominium

Operation: Sale

- **Stratum:** 3
- **Land:** 55.1 sqm
- **Building:** 55.1 sqm
- **Bedrooms:** 3
- **Bathrooms:** 2
- **Stories:** 12
- **Kitchen:** Full kitchen
- **Land:** regular
- **Condition:** New
- **Building Classification:** Muy bueno
- **Number of Elevators:** 1
- **Floor number:** 4
- **Construction Quality:** Middle - High
- **Showers:** 2
- **Border Crossing Distance:** 3
- **Floor Type:** Cerámica
- **environments:** 1

- | | | | |
|-----------------|------------------------------|-----------------------|----------------------------|
| • Hot water | • Elevator | • Balcony | • Natural gas water heater |
| • Fire detector | • Electric stove | • Electric oven | • Solid door |
| • Security door | • Panoramic view | • Residential area | • Trans. Close public |
| • Closet | • In Building | • In residential area | • Urban area |
| • Cornerback | • Close to commercial sector | | |

Property status

State: New

Age: 1

Without Mortgage: Yes

Description

Apartment with excellent lighting, located in a quiet area that is valued more day by day, three bedrooms, the main one with its respective bathroom, layer 3 which facilitates everything related to public services and taxes. Transportation at hand, close to the San Martin University and the Primitivo Leal school and just three minutes from the Aves María Shopping Center.

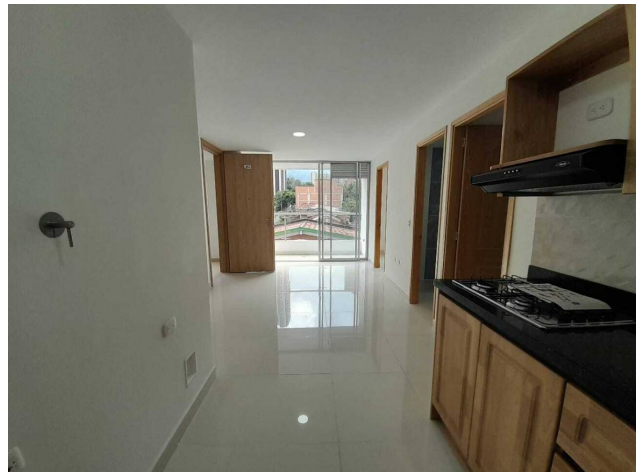
Location

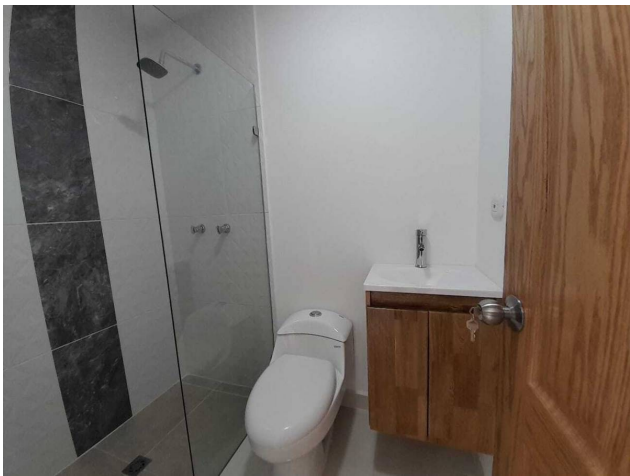
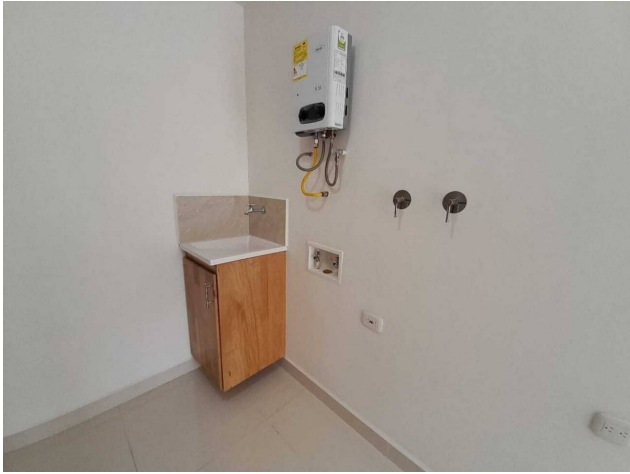
La Doctora, Sabaneta, Antioquia

References

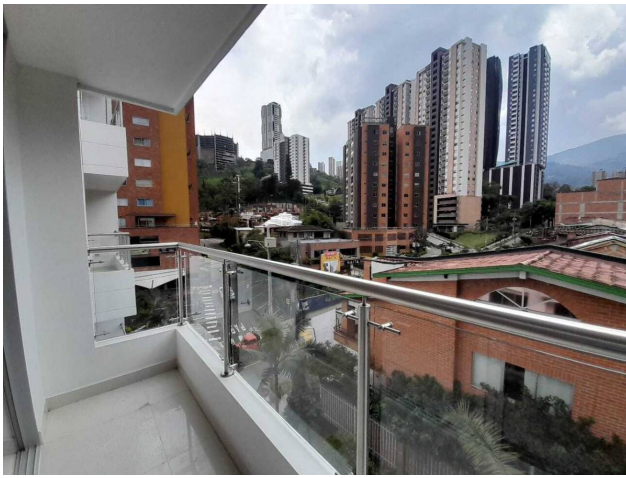


Photo Catalog









Calle 35 A # 80A - 06, Laureles, Medellín, Antioquia
T 6044489383 | comercial@c21laheredad.com

Property subject to availability.

Price subject to change without notice.

The sending of this file does not commit the parties to the subscription of any legal document. The information and measurements are approximate and must be confirmed with the relevant documentation.