



Nini Espitia
Galindo

CENTURY 21.

Racines

ID: 125615
nеспitia@c21racines.com
+573195389604



Land for Sale

La Pradera, Jamundi, Valle del Cauca



Sale: \$105,000,000.00

Property type: Land

Operation: Sale

- Stratum: 4
- Land: 90.0 sqm
- Building: 90.0 sqm
- Front measurement: 6.0 m
- Background measurement: 15.0 m
- Land: regular

- Land Use: VIVIENDA
- Number Of Houses: 69

- Pool
- Communal swimming pool

- Pets Allowed
- Goal

- Uncovered parking

- Visitors Parking

Property status

Age:

Without Mortgage: Yes

Description

Condominium lots for sale in the Country sector at the entrance to Jamundí, next to Tecnochemicals, this is a residential area away from the noise of the city. The type of construction is uniform in facades and some characteristics of the homes. The lot has 90 square meters, distributed as follows: 6m. in front by 15 meters deep. The complex has a swimming pool, children's games and parking for visitors. Area in growing development with good access roads, close to shops, don't leave it for later... there are few lots left for sale!!

Location
La Pradera, Jamundi, Valle del Cauca

References



Photo Catalog



LOTES MANZANA 1



6 M2 X 15 M2 = 90 M2 C/U

LOTES MANZANA 1



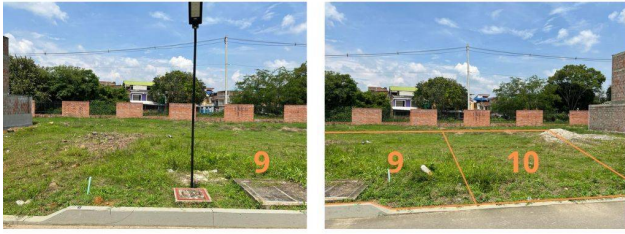
6 M2 X 15 M2 = 90 M2 C/U

LOTES MANZANA 3

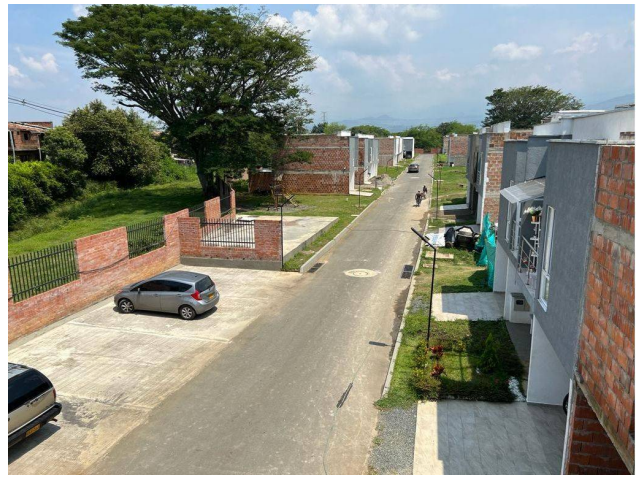


6 M2 X 15 M2 = 90 M2 C/U

LOTES MANZANA 4



6 M2 X 15 M2 = 90 M2 C/U



Carrera 2 Oeste # 2 - 41 oficina 201, El Peñón, Cali, Valle del Cauca
T 6023747000 | publicidad@c21racines.com | www.c21racines.co

Property subject to availability.

Price subject to change without notice.

The sending of this file does not commit the parties to the subscription of any legal document. The information and measurements are approximate and must be confirmed with the relevant documentation.