



Isabel Cristina Mosquera

**CENTURY 21.**

Racines

ID: 126114  
imosquera@c21racines.com  
+573167383237



**Condominium for Rent**

Calle 20 N Santa Monica Residencial, Cali, Valle del Cauca



**Rent: \$1,650,000.00**

**Maintenance : \$522,000**

**Property type: Condominium**

**Operation: Rent**

- **Stratum:** 5
- **Land:** 44.0 sqm
- **Building:** 44.0 sqm
- **Bedrooms:** 1
- **Bathrooms:** 1
- **Parking lots:** 2
- **Kitchen:** Full kitchen
- **Number of Elevators:** 1
- **Floor number:** 5
- **Number Of Houses:** 33

- **environments:** 2

- |                |                        |                   |                    |
|----------------|------------------------|-------------------|--------------------|
| • Pets Allowed | • Disabled access      | • Hot water       | • Elevator         |
| • Balcony      | • Surveillance cameras | • Covered parking | • Visitors Parking |
| • Goal         |                        |                   |                    |

**Property status**

Age: 2005

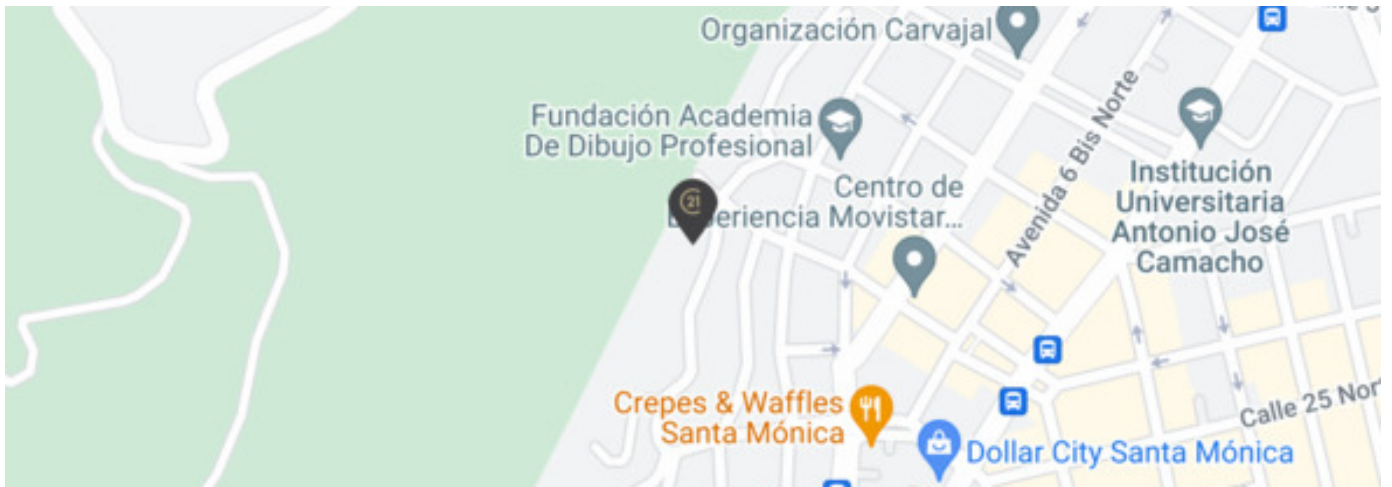
**Description**

studio apartment for rent in Santa Mónica, excellent location, one block from sixth avenue, easy public transportation, close to Notaria 12, Farmatodo, exclusive area of Granada, features that make it the ideal place to live, consists of living room, dining room , balcony, full kitchen, laundry area, room with bathroom, fresh, bright, safe, has double linear parking.

**Location**

Calle 20 N Santa Monica Residencial, Cali, Valle del Cauca

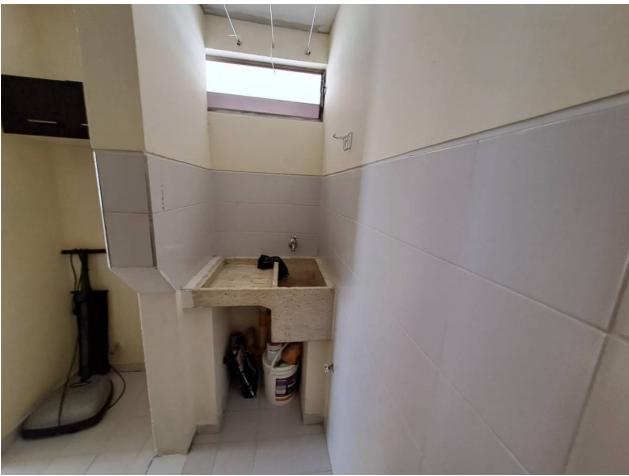
**References**



**Photo Catalog**









**Carrera 2 Oeste # 2 - 41 oficina 201, El Peñón, Cali, Valle del Cauca**  
**T 6023747000 | [publicidad@c21racines.com](mailto:publicidad@c21racines.com) | [www.c21racines.co](http://www.c21racines.co)**

Property subject to availability.

Price subject to change without notice.

The sending of this file does not commit the parties to the subscription of any legal document. The information and measurements are approximate and must be confirmed with the relevant documentation.