



Juliana Cano  
Londoño

CENTURY 21

Onix

ID: 129010  
asistente@century21onix.com.co  
+573222882822



### Finca-recreacion for Sale

Salida al Puente de Occidente, Santa Fe De Antioquia, Antioquia



Sale: \$1,600,000,000.00

Property type: Finca-recreacion

Operation: Sale

- Stratum: 4
- Land: 9,000.0 sqm
- Building: 450.0 sqm

- Bedrooms: 6
- Bathrooms: 5

- Pool

### Property status

Age: 15

### Description

Property for sale in Santa Fe De Antioquia: El Tunal village, La Chorquina area. It is 6 kilometers from the sports center, an unpaved but very good road. It is approximately 9000 meters, it is sold as a true body. It is on the side of the road. Well landscaped and very beautiful topography. It has a super good neighborhood. They are helpful and collaborative if you need them. It has 30 fruit trees in production and space for the same, without affecting the surroundings of the house or the pool. The house and what is built is approximately 400 meters. It consists of 6 bedrooms, 5 bathrooms, a very large living room, dining room and kitchen, all separate. It has water and energy from Public Companies of Medellin, and in addition it has irrigation water, whose hydrant is worth between 15 to 20 million pesos, if it can be obtained. The corridors are too wide and inside one of them there is a reception room. The ceilings, doors and windows are all made of wood that has been sawn for more than 100 years, as they are from a house that belonged to Zenu and was demolished to build some towers. The pool is American and is 5 by 10, with a wide platform around it and has a shower, dressing room, toilet and urinal, all independent. The best thing about that farm is that it does not need a butler, due to how healthy the sidewalk is. The papers are on the agenda and are provided for any Lawyer to study.

## Location

Salida al Puente de Occidente, Santa Fe De Antioquia, Antioquia

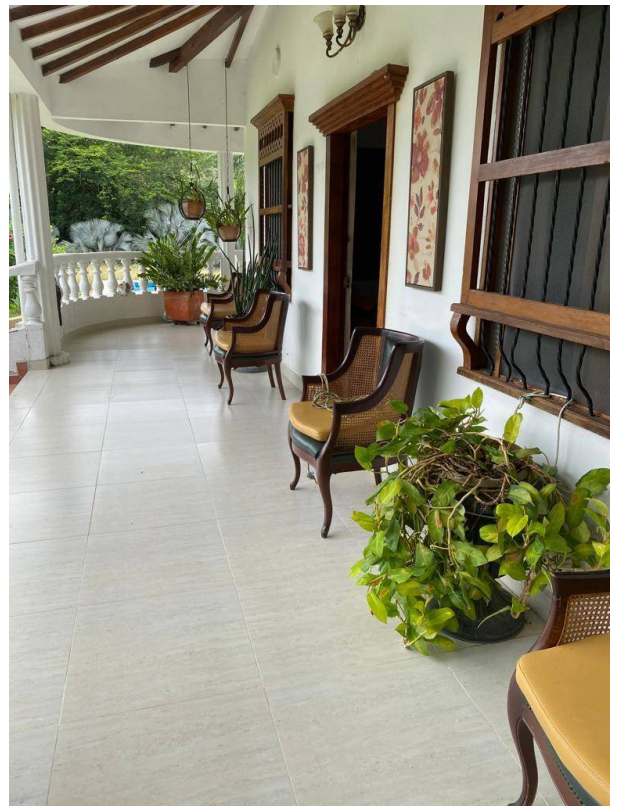
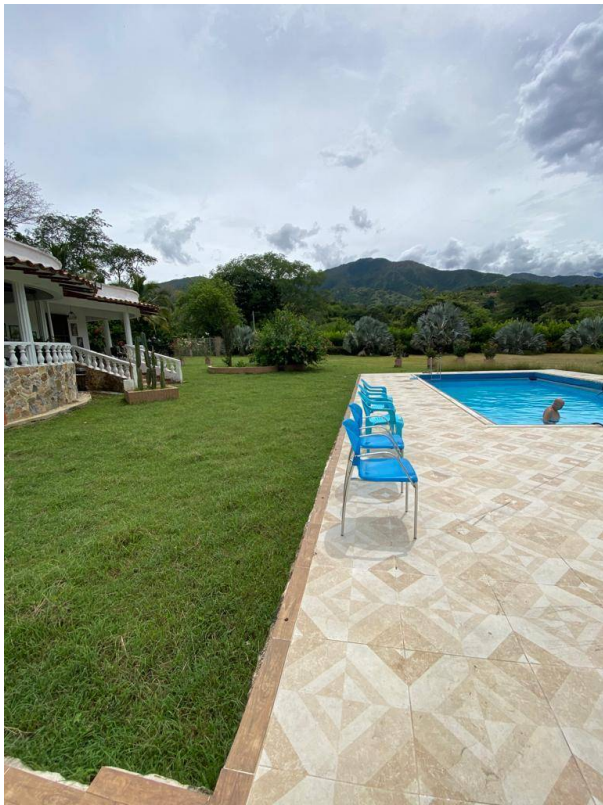
## References



## Photo Catalog



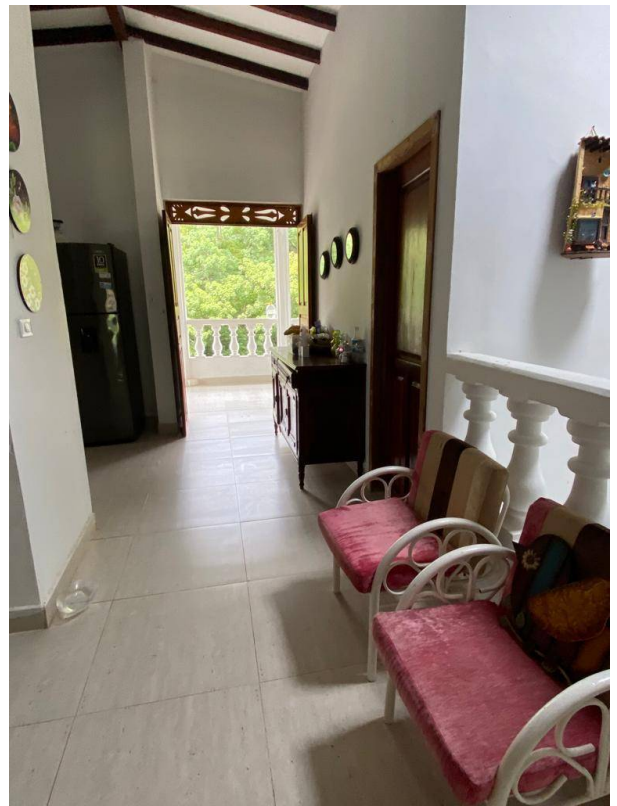
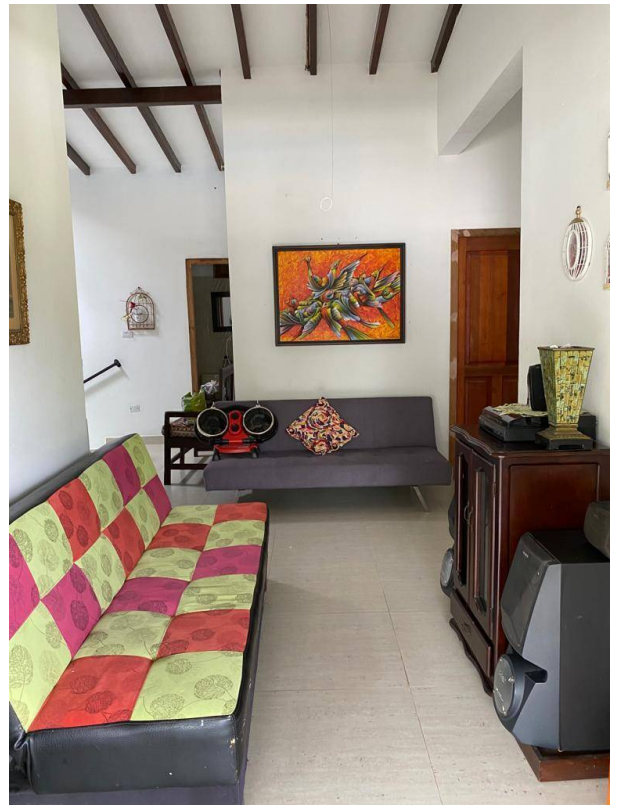






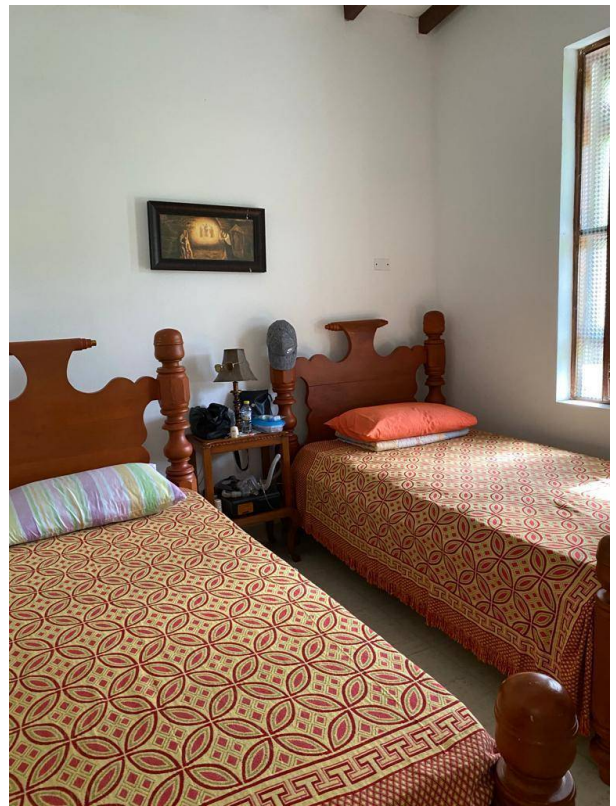
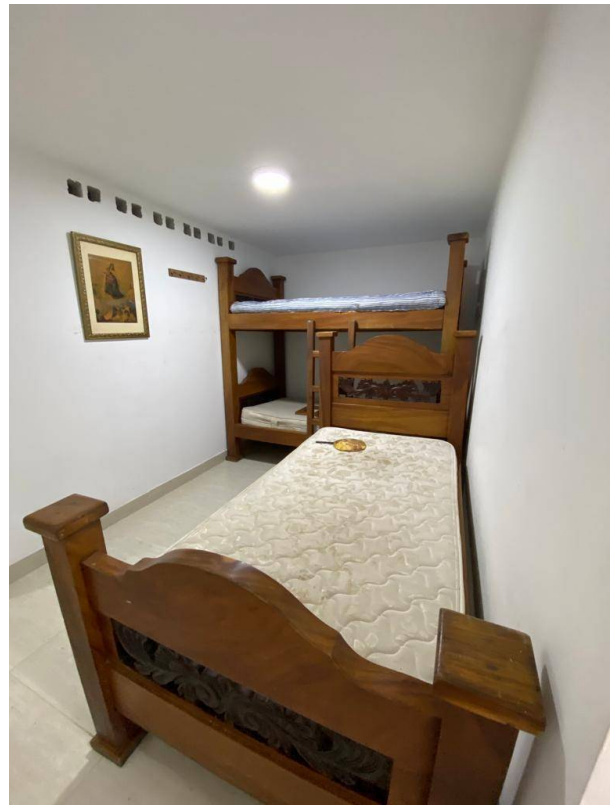


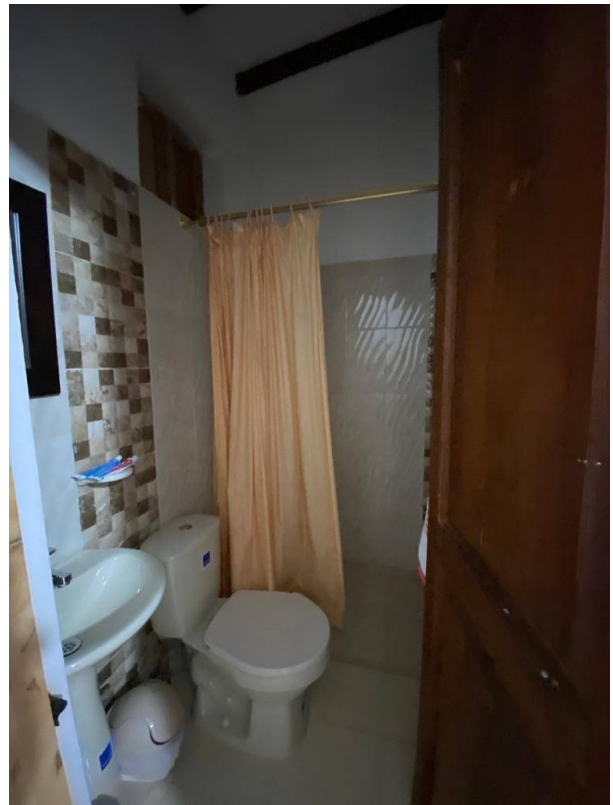












**Carrera 32 # 2sur - 87, El Poblado, Medellín, Antioquia**  
**T 6045017373 | [gerencia@century21onix.com.co](mailto:gerencia@century21onix.com.co) | [www.century21onix.com.co](http://www.century21onix.com.co)**

Property subject to availability.

Price subject to change without notice.

The sending of this file does not commit the parties to the subscription of any legal document. The information and measurements are approximate and must be confirmed with the relevant documentation.



