



Mary Piedrahita

CENTURY 21

Racines

ID: 129078

mpiedrahita@c21racines.com

+573166903204



Offices for Rent

San Fernando Viejo, Cali, Valle del Cauca



Rent: \$7,500,000.00

Property type: Offices

Operation: Rent

- **Stratum:** 6
- **Land:** 354.0 sqm
- **Building:** 319.0 sqm
- **Bathrooms:** 4
- **Stories:** 1
- **Kitchen:** Full kitchen
- **Land:** regular
- **Condition:** Excellent
- **Land Use:** COMERCIAL
- **Construction Quality:** High
- **Office area:** 319

- **Floor Type:** Cerámica

- Electric door
- Supermarkets / C.Ciales
- Restaurants

- Yard
- Close to commercial sector

- Courtyard
- At home
- Administrative office

- Garaje(s)
- Conference Room
- Internal parking

Property status

State: Excellent

Age: 7

Description

Modern furnished office for rent in the old San Fernando neighborhood of Cali, designed by several architects.

The property has large windows and several patios, which allow light and air to flow naturally, resulting in an environment conducive to office work.

The property has a full kitchen equipped with an oven and stove as well as a bar to have lunch and feel at home, 3 interior patios, one of them with a fountain that complement this relaxed atmosphere with its sound and original design, 12 jobs in the area. Open office, with expansion possibilities.

2 private offices with air conditioning

1 meeting room with air conditioning.

Service Room - Storage

4 bathrooms

2 covered parking spaces in the basement. Make your appointment, we are waiting for you, your company and you, they deserve it.

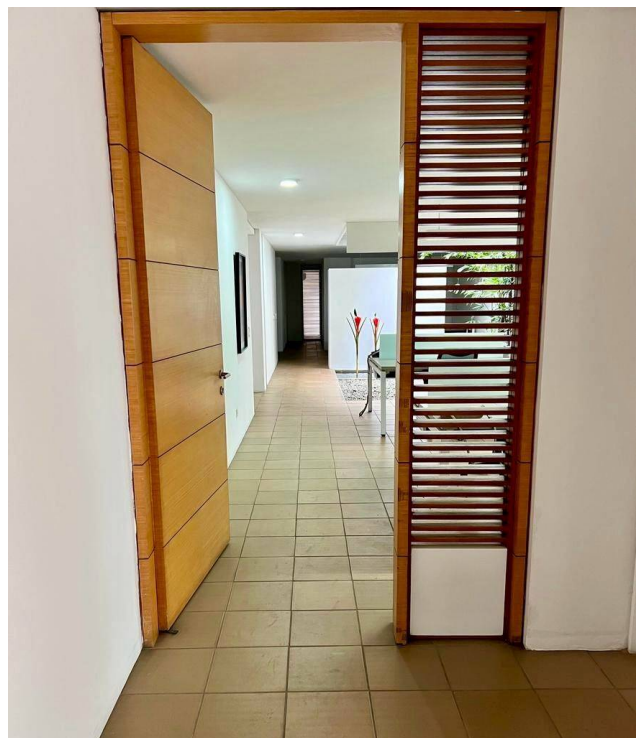
Location

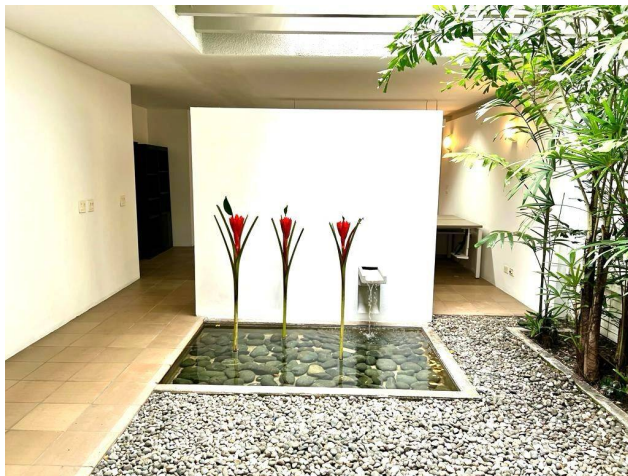
San Fernando Viejo, Cali, Valle del Cauca

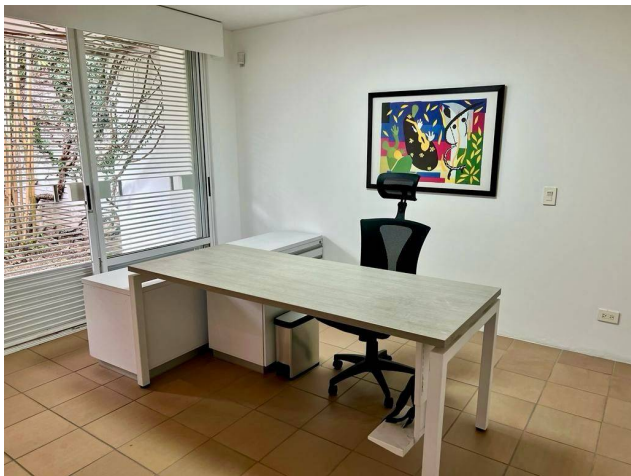
References

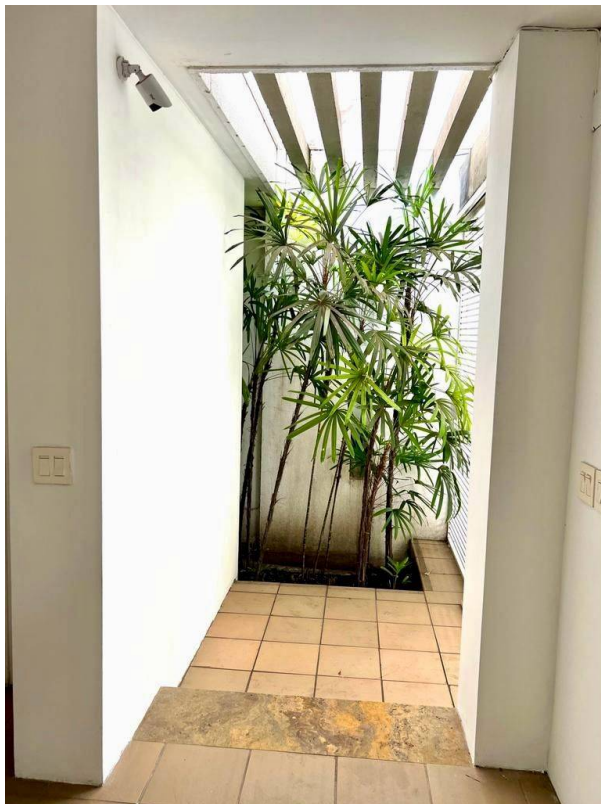
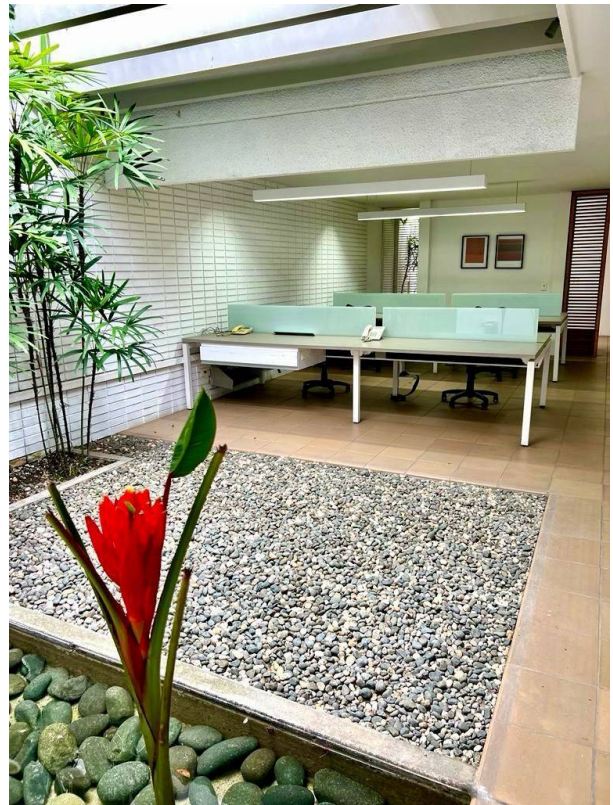


Photo Catalog









Carrera 2 Oeste # 2 - 41 oficina 201, El Peñón, Cali, Valle del Cauca
T 6023747000 | publicidad@c21racines.com | www.c21racines.co

Property subject to availability.

Price subject to change without notice.

The sending of this file does not commit the parties to the subscription of any legal document. The information and measurements are approximate and must be confirmed with the relevant documentation.

