



Alejandra Peláez Ochoa

CENTURY 21.

Radial

ID: 129413
apelaez@century21radial.com
+573122882976



Condominium for Sale

Rionegro, Rionegro, Antioquia



Sale: \$544,000,000.00

Property type: Condominium

Operation: Sale

- **Stratum:** 5
- **Land:** 74.2 sqm
- **Building:** 74.2 sqm
- **Bedrooms:** 2
- **Bathrooms:** 2
- **Parking lots:** 2
- **Stories:** 1
- **Kitchen:** Full kitchen
- **Number of Elevators:** 1
- **Floor number:** 7

- | | | | |
|------------------------------|-----------------------|---------------------|-----------------------|
| • Pets Allowed | • Elevator | • Balcony | • Turkish bath |
| • Warehouse | • Deposit | • Gym | • Jacuzzi |
| • Childish games | • Visitors Parking | • Social room | • Sauna |
| • BBQ terrace | • Integral kitchen | • Parkland | • Cytophone |
| • Residential area | • Trans. Close public | • 24x7 surveillance | • In residential area |
| • 24 * 7 private surveillanc | • Outdoor gardens | | |

Property status

Age: 2026

Without Mortgage: Yes

Description

I am selling an Apartment Assignment of Trustee right in the San Nicolas Rionegro sector, it will be delivered in the first quarter of 2026, this assignment allows you to pay \$271,000,000 to the owner at the time of purchase and upon delivery of the apartment you pay the construction company \$243,000,000 .

This beautiful apartment has a dining room, balcony with a beautiful view, 2 bedrooms, the main one with bathroom and dressing room, social bathroom, clothing area, 1 double linear parking space and 1 useful room.

The closed unit has a 24/7 concierge, gym, social room, jacuzzi, Turkish, playground, barbecue area, pet area, amusement plaza, water mirror, outdoor furniture and recreation area, its privileged location, with the Close to the entire commercial area of San Nicolas, Somer Clinic, Comfama Park, Rionegro Park, 15 minutes from Jose Maria Cordoba Airport and 40 minutes from Medellín through the tunnel.

Location

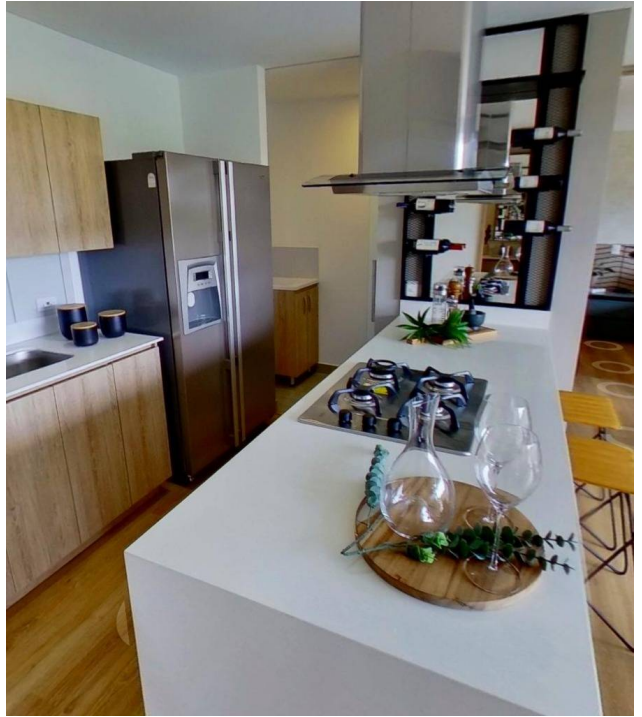
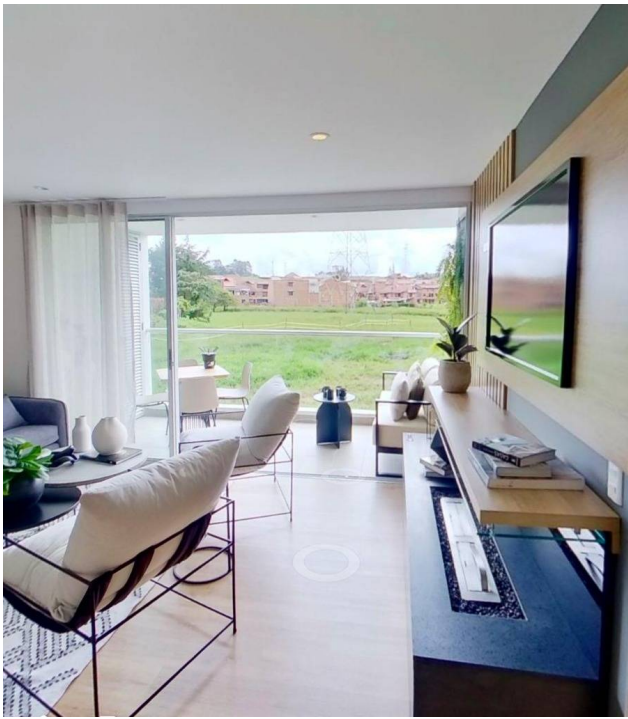
Rionegro, Rionegro, Antioquia

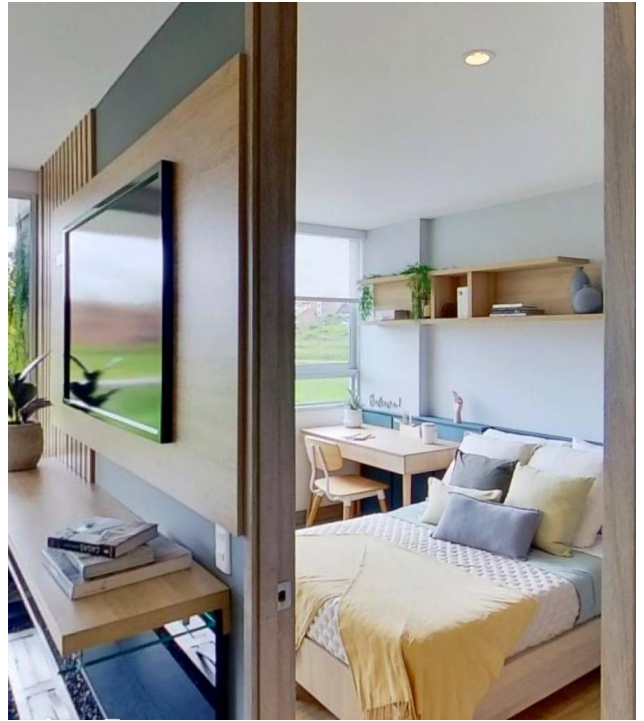
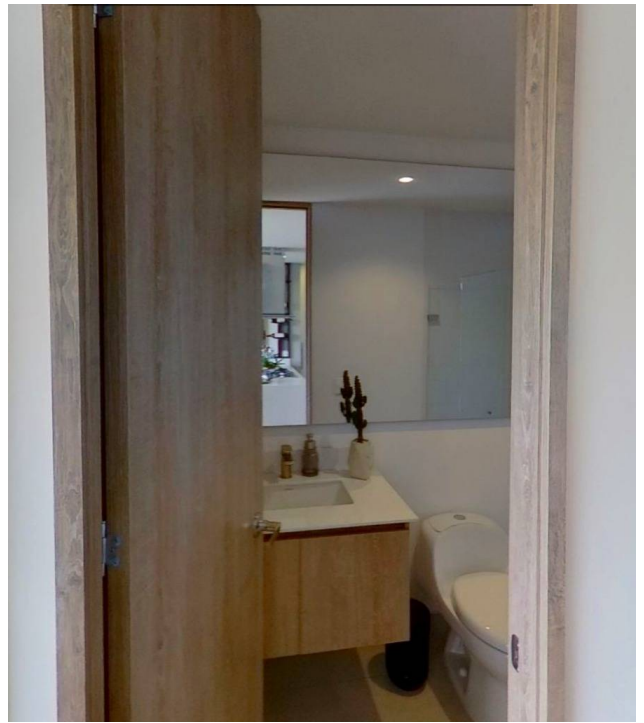
References



Photo Catalog









*Información sujeta a ajustes o cambios



Rionegro, San Nicolás

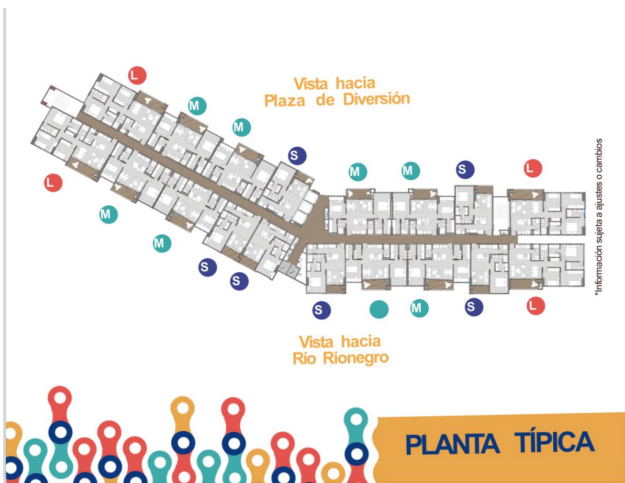
A 40 min. de Medellín
 A 7 min. caminando del CC San Nicolás.
 A 10 min. de Comfama y del Parque Santander.

A 6 km Llanogrande
 A 2 km San Antonio de Pereira
 A 2.5 km Carmen de Viboral



URBANISMO

*Información sujeta a ajustes o cambios



PLANTA TÍPICA

Calle 20 Sur # 27-55, Medellín, Medellín, Antioquia

T 6045898666 | gerencia@century21radial.com | www.century21radial.com

Property subject to availability.

Price subject to change without notice.

The sending of this file does not commit the parties to the subscription of any legal document. The information and measurements are approximate and must be confirmed with the relevant documentation.