



**Dora Mercedes Galvis
Vargas**

CENTURY 21.

Galvis Inmobiliaria

ID: 129654

gerencia@c21galvisinmobiliaria.com

+573134410850



Finca-produccion for Sale

Puerto Gaitán, Puerto Gaitan, Meta



Sale: \$15,313,000,000.00

Property type: Finca-produccion

Operation: Sale

- **Stratum:** 2
- **Land:** 1,701.0 Hectares
- **Building:** 1,701.0 Hectares
- **Bedrooms:** 8
- **Bathrooms:** 7
- **Kitchen:** Full kitchen
- **Land:** irregular
- **Condition:** Excellent
- **Land Use:** GANADERIA
- **Number Of Houses:** 3
- **Construction Quality:** High
- **environments:** 5

- | | | | |
|--------------------|-----------------------|----------------------------|------------------------|
| • Pool | • Pets Allowed | • Warehouse | • Private pool |
| • Waterhole | • Septic tank | • Service Alcove | • Parkland |
| • Power plant | • Hall of Alcoves | • Access for tractor units | • River / creek nearby |
| • Fruit trees | • Native forest | • Manger | • Hammock area |
| • All the services | • Natural ventilation | • With Housing | • Rural area |
| • Dinning Room | • Cattle farm | • Water births | • Outdoor gardens |

Property status

State: Excellent

Age: 1995

Without Mortgage: Yes

Description

Livestock farm, located in the Colombian Altillanura, which is accessed through KM 106 of the paved road that connects Puerto López with Puerto Gaitán, Department of Meta, where the La Fazenda Refrigerator is located, there you enter on the right along a national road in good condition, and the farm begins 4.5 km from the paved road, bordering to the north with one of the largest palm plantations in the region, which has its own extraction plant. To the south, it borders the Haciendas Ganaderas, Santa Ines and El Capricho, and towards that same sector, 5 km away, are the Haciendas Guayabal and Machijure, the latter also owned by La Fazenda, where they raise and fatten more than 200,000 pigs permanently. To the east it borders the Caño Maiciana, 4.5 km away, which separates it from a new rural urbanization under development. To the west it borders the famous Yucao River for about 4 km.

The Hacienda is made up of three properties with an area of 1,701 hectares, which is completely fenced; with approximately one thousand one hundred hectares of different varieties of brachiaria grass (llanero, decumbens, humidicola, suri, toledo,) planted during the last 27 years, for the main activity which is livestock, where in addition to the native forests on the rivers , lagoons and morichales, it has approximately one hundred hectares planted with timber trees, Caribbean Pine and Acacia Magnum.

The farm has a main house with a swimming pool, 5 rooms with capacity for 18 people, plus a house for visitors with capacity for 10 people, a house for the assistants, a warehouse for machinery, a camp for workers, spacious and fresh corridors. , dining room and semi-industrial kitchen.

Water well built at a depth of 140 meters and a flow rate of 5 liters per second, reservoir with a capacity of 300,000 liters and 800 hectares of underground aqueduct, to convey water to the drinking fountains in the different pastures of the farm, corral with capacity 500 head of cattle and pier.

Location

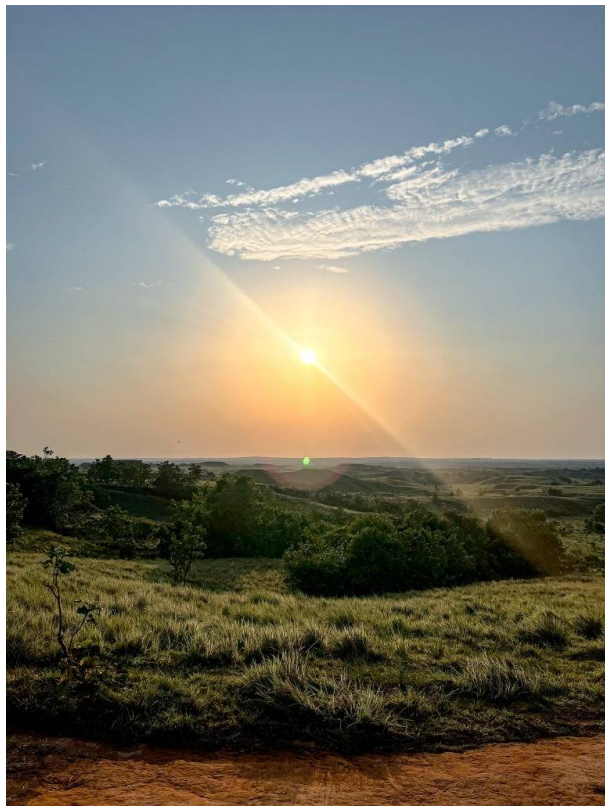
Puerto Gaitán, Puerto Gaitan, Meta

References

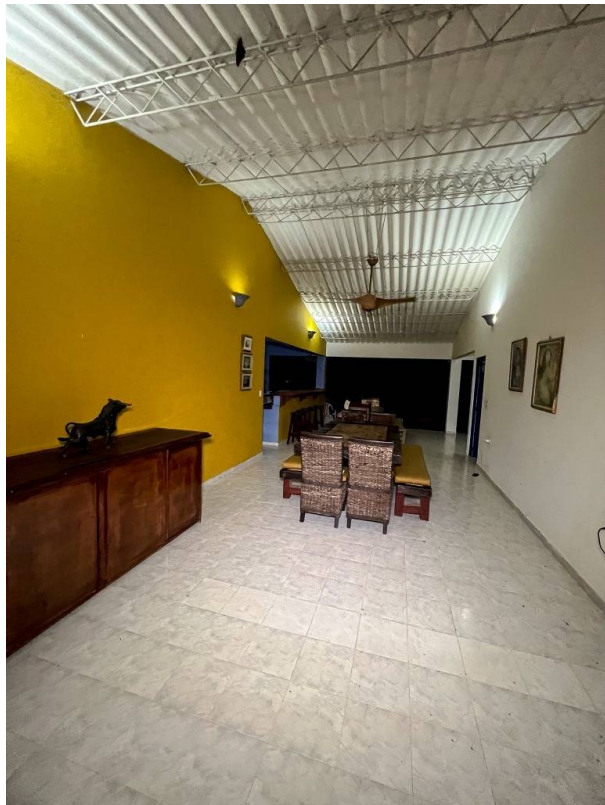


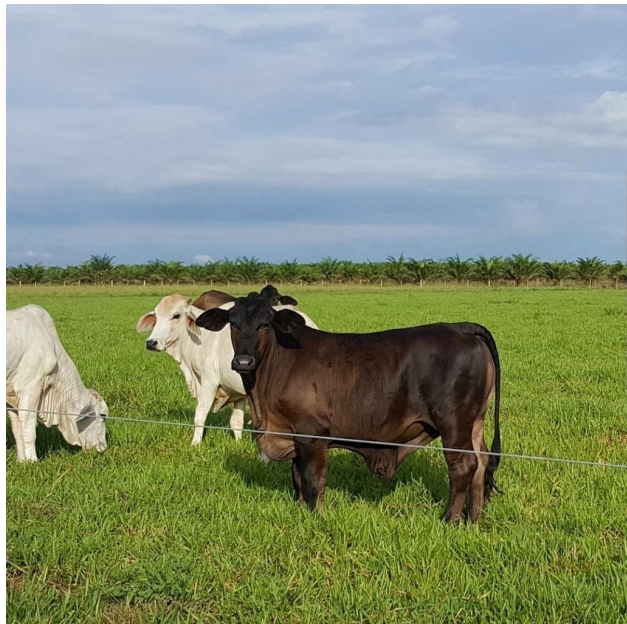
Photo Catalog











Calle 26 # 39-08 Edif. Taira Oficina 208,Villavicencio, Villavicencio, Meta
T 3204051683 | gerencia@c21galvisinmobiliaria.com | www.c21galvisinmobiliaria.com

Property subject to availability.

Price subject to change without notice.

The sending of this file does not commit the parties to the subscription of any legal document. The information and measurements are approximate and must be confirmed with the relevant documentation.