



Edison Lugo

**CENTURY 21.**  
Metropolitan

ID: 130352  
e.lugo@c21metropolitan.com.co  
+573045619564



**Condominium for Sale**

Suba Bilbao, Bogotá, Cundinamarca



**Sale: \$155,000,000.00**

**Maintenance : \$85,000**

**Property type: Condominium**

**Operation: Sale**

- **Stratum:** 2
- **Land:** 60.0 sqm
- **Building:** 54.0 sqm
- **Bedrooms:** 3
- **Bathrooms:** 2
- **Floor number:** 3
- **Showers:** 2
- **Floor Type:** Cerámica

- |                        |                     |                     |                     |
|------------------------|---------------------|---------------------|---------------------|
| • Surveillance cameras | • Closed circuit TV | • Propane gas stove | • Natural gas stove |
| • Childish games       | • Visitors Parking  | • Goal              | • Social room       |
| • Surveillance Service | • Residential area  | • Nearby parks      |                     |

**Property status**

Age: 2009

**Description**

Are you looking for an affordable, cozy and bright apartment? This one is perfect for you! Located on the third floor with access by comfortable stairs and views of internal gardens. Enjoy a very ventilated kitchen and laundry area, three bedrooms (the main one with a private bathroom) and an additional bathroom. Located in a closed complex with 24-hour security, surrounded by parks, synthetic soccer fields, schools and supermarkets. In addition, it has communal parking through a lottery, all at an excellent price! Contact us to schedule a visit!

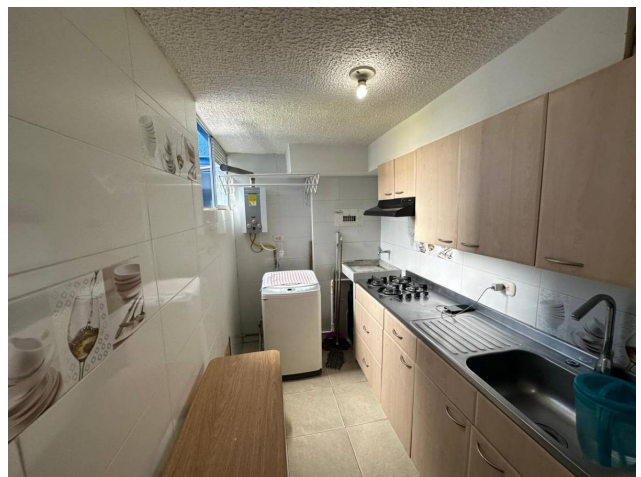
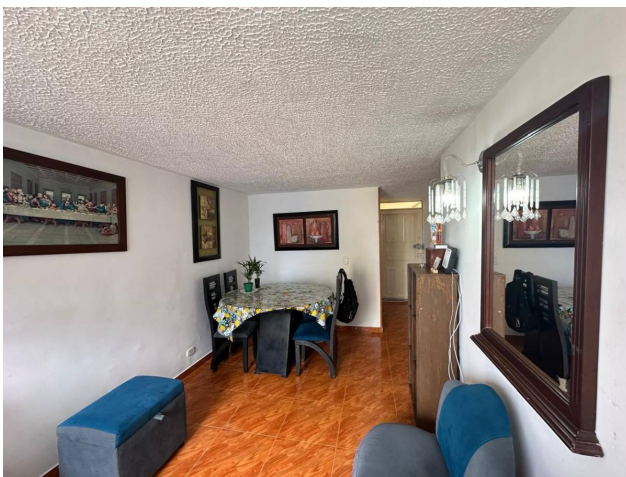
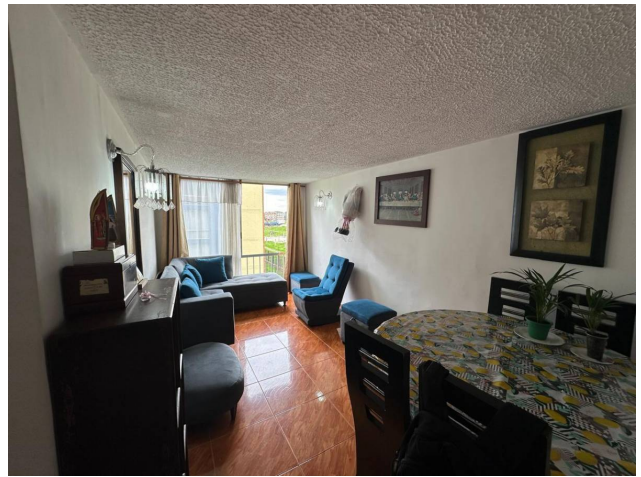
## Location

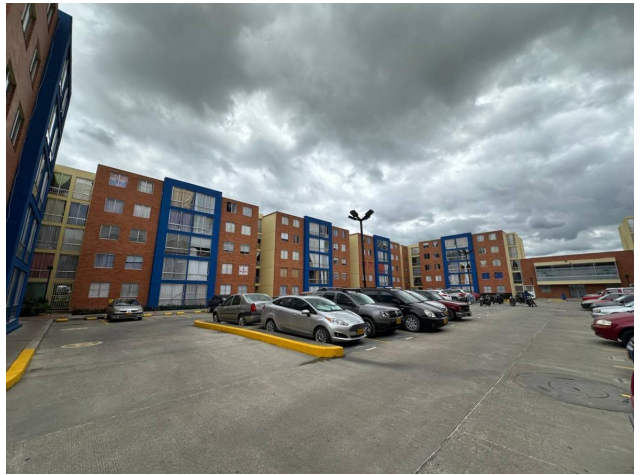
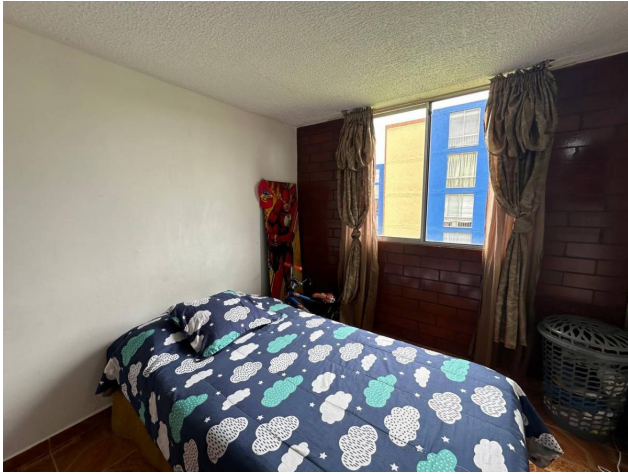
Suba Bilbao, Bogotá, Cundinamarca

## References



## Photo Catalog







**Carrera 15 # 112-36 Local 105, Santa Bárbara, Bogotá, Cundinamarca**  
**T 6017456977 | [hola@c21metropolitan.com.co](mailto:hola@c21metropolitan.com.co)**

Property subject to availability.

Price subject to change without notice.

The sending of this file does not commit the parties to the subscription of any legal document. The information and measurements are approximate and must be confirmed with the relevant documentation.