



Omar Alejandro Alfonso
Melo

CENTURY 21.
Metropolitan

ID: 130620
o.alfonso@c21metropolitan.com.co
+573054250838



Offices for Sale

Cajicá, Cajica, Cundinamarca



Sale: \$305,000,000.00

Property type: Offices

Operation: Sale

- **Stratum:** 4
- **Land:** 36.0 sqm
- **Building:** 36.0 sqm
- **Parking lots:** 2
- **Land:** regular
- **Number of Elevators:** 2
- **Floor number:** 6
- **Floor Type:** Cerámica
- **environments:** 5

- No Pets Allowed
- Elevator
- Smoke detector
- Social room
- Parkland
- Nearby parks
- Cubicles

- Disabled access
- Turkish bath
- Covered parking
- Surveillance Service
- Panoramic view
- Internal parking
- Access control

- Hot water
- Closed circuit TV
- Uncovered parking
- BBQ terrace
- Country Zone
- Reception
- Good access

- Furnished
- Deposit
- Goal
- Bath Service
- Shopping area
- Terrace
- Natural lighting

Property status

Age: 2016

Without Mortgage: Yes

Description

Office fully equipped with furniture, arranged with 8 workstations (1 managerial, 1 leader and 6 operational), 5-seat boardroom table, glass partition. All the workstations have electrical connectivity, LED lighting, 2 covered parking spaces and a storage room.

LOCATION

In the NOU Business Center in Cajicá its strategic location facilitates mobility in and out of this complex connecting with important access roads such as Autopista Norte, via Guaymaral, Via Chía Cajicá, Carrera 7, Via Bogotá - Sopo, Via Cota and Via Zipaquirá Cajicá. NOU has more than 600 mt2 Business with meeting rooms, theater, auditorium, gym, sauna, Turkish bath, state-of-the-art elevators, food court, panoramic terrace with gas fireplaces.

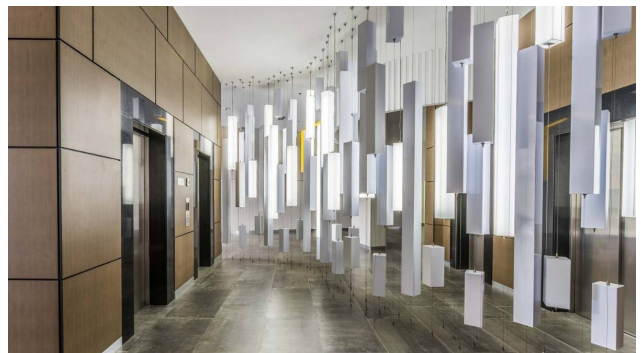
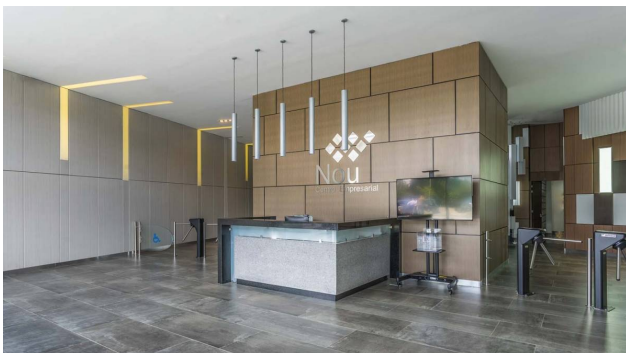
Location

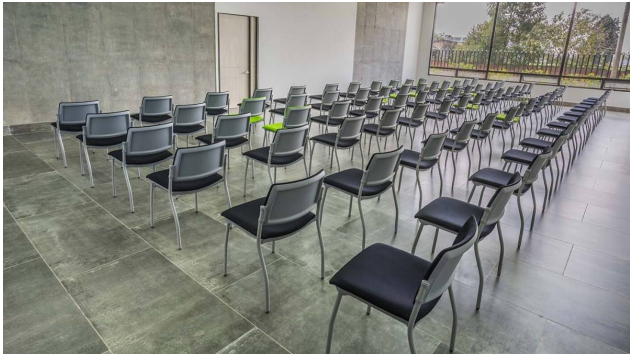
Cajicá, Cundinamarca

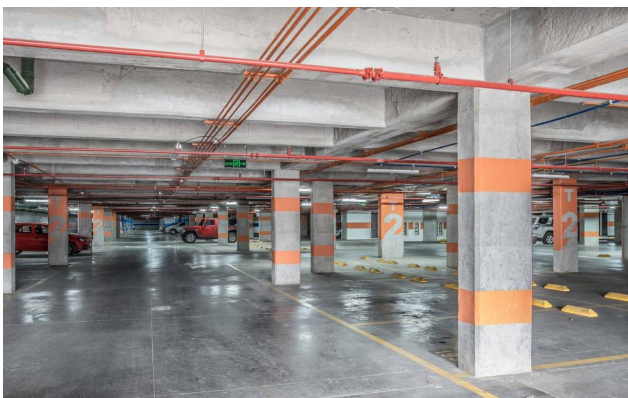
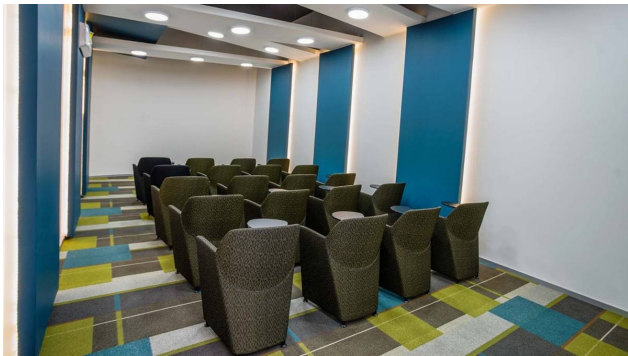
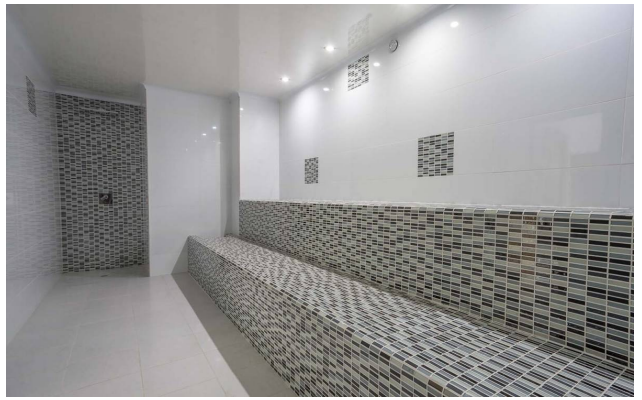
References



Photo Catalog







Carrera 15 # 112-36 Local 105, Santa Bárbara, Bogotá, Cundinamarca
T 6017456977 | hola@c21metropolitan.com.co

Property subject to availability.

Price subject to change without notice.

The sending of this file does not commit the parties to the subscription of any legal document. The information and measurements are approximate and must be confirmed with the relevant documentation.