



**Sandra Milena Arango
Leon**

CENTURY 21.

Elite

ID: 130710
sandra.arango@c21elite.com.co
+573155538663



Condominium for Sale

La Campiña, Cali, Valle del Cauca



Sale: \$360,000,000.00

Maintenance : \$440,000

Property type: Condominium

Operation: Sale

- **Stratum:** 5
- **Land:** 66.2 sqm
- **Building:** 66.2 sqm
- **Bedrooms:** 2
- **Bathrooms:** 2
- **Parking lots:** 1
- **Kitchen:** Full kitchen
- **Land:** regular
- **Condition:** Very good
- **Construction Quality:** High

- | | | | |
|-----------------------|-----------------------|---------------------------|------------------------------|
| • Pool | • Pets Allowed | • Elevator | • Balcony |
| • Jacuzzi | • Childish games | • Covered parking | • Visitors Parking |
| • Social room | • Sauna | • Surveillance Service | • basement |
| • In a closed set | • Integral kitchen | • Panoramic view | • Cytophone |
| • Residential area | • Trans. Close public | • Supermarkets / C.Ciales | • 24x7 surveillance |
| • Goal / Surveillance | • Fruit trees | • Equipped kitchen | • 24 * 7 private surveillanc |

Property status

State: Very good

Age: 2009

Without Mortgage: Yes

Description

Beautiful Miró Building apartment next to the most exclusive Chipichape and Pacific Mall shopping centers, the apartment has a dining room with a balcony, two bedrooms with large closets, 2 bathrooms, an open kitchen, a laundry room, a large storage room and parking. The building has a swimming pool, jacuzzi, sauna, terrace and social room, two elevators, 24-hour security.

Location

La Campiña, Cali, Valle del Cauca

References

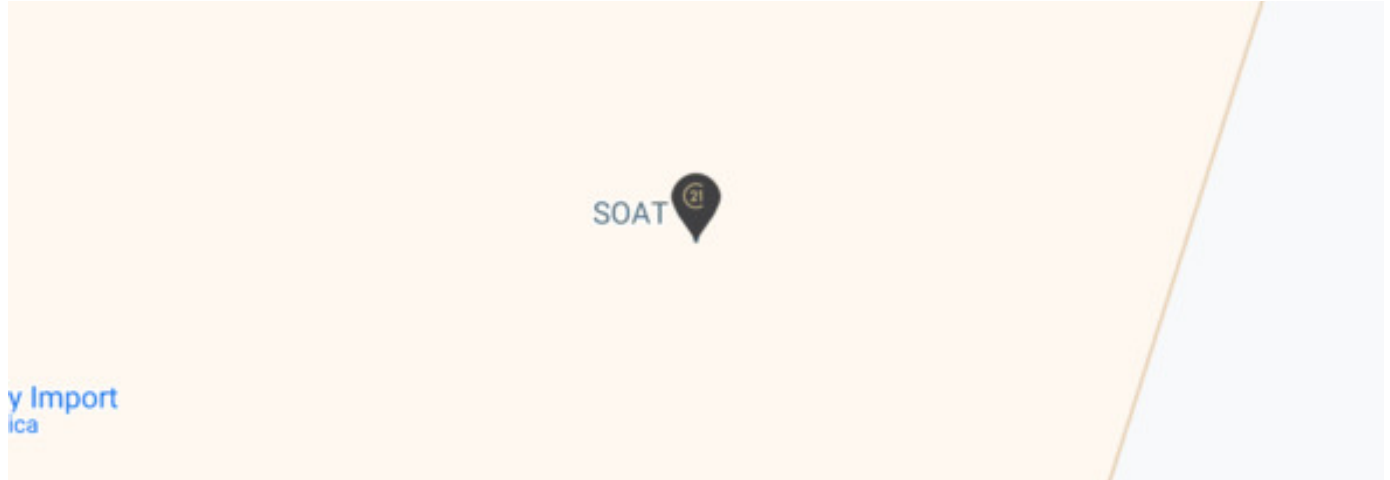
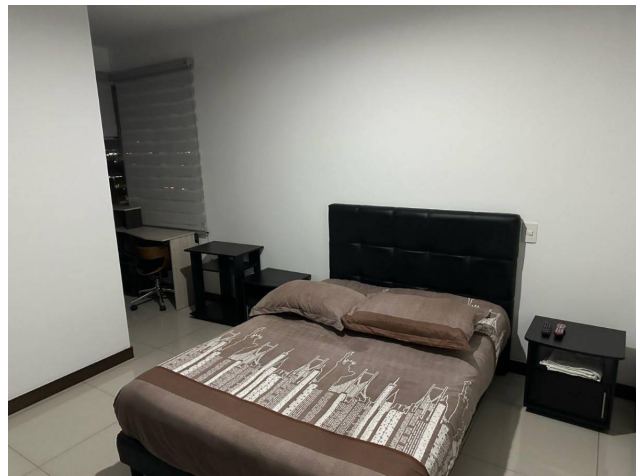
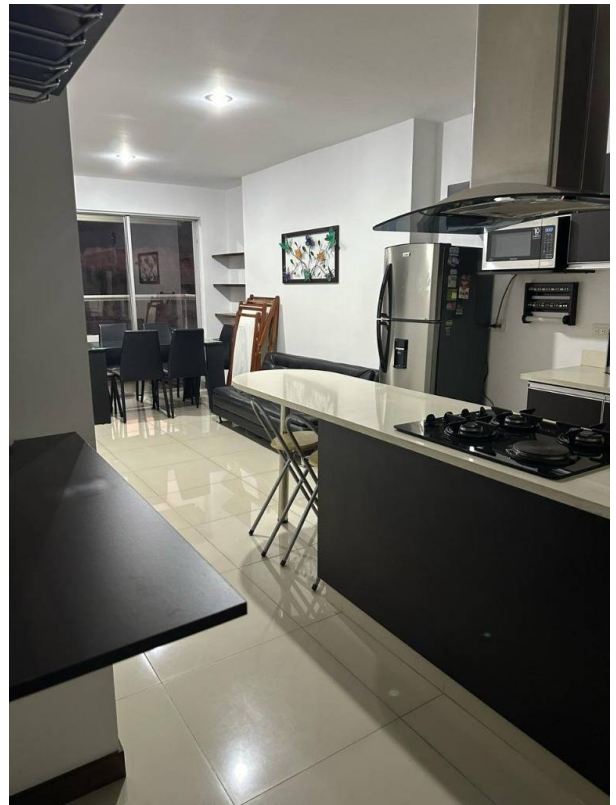
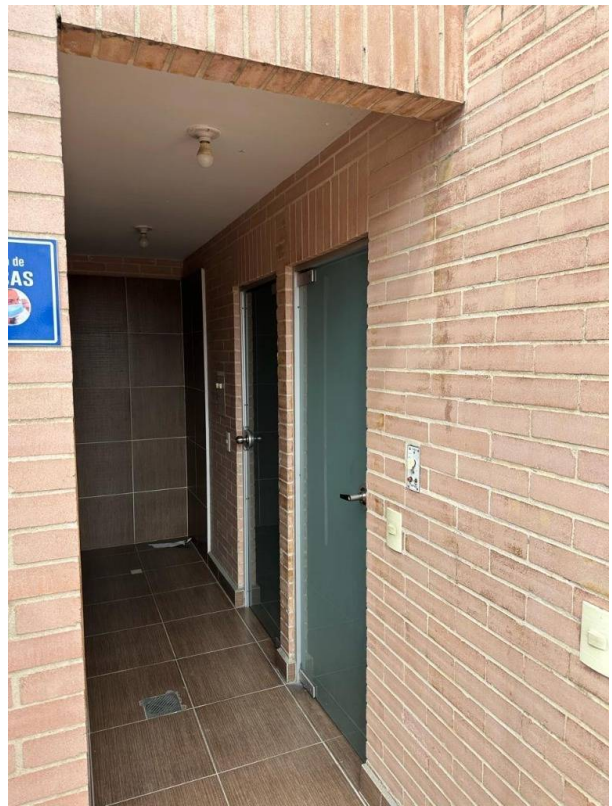
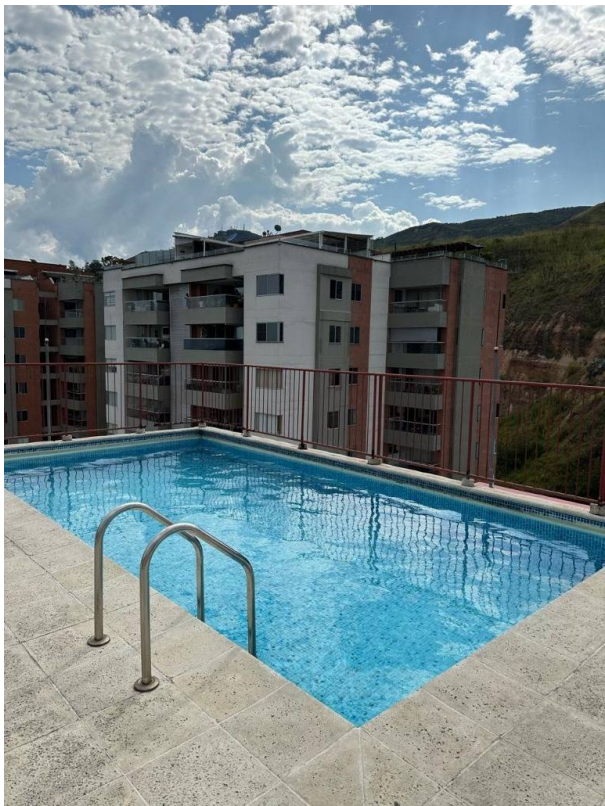
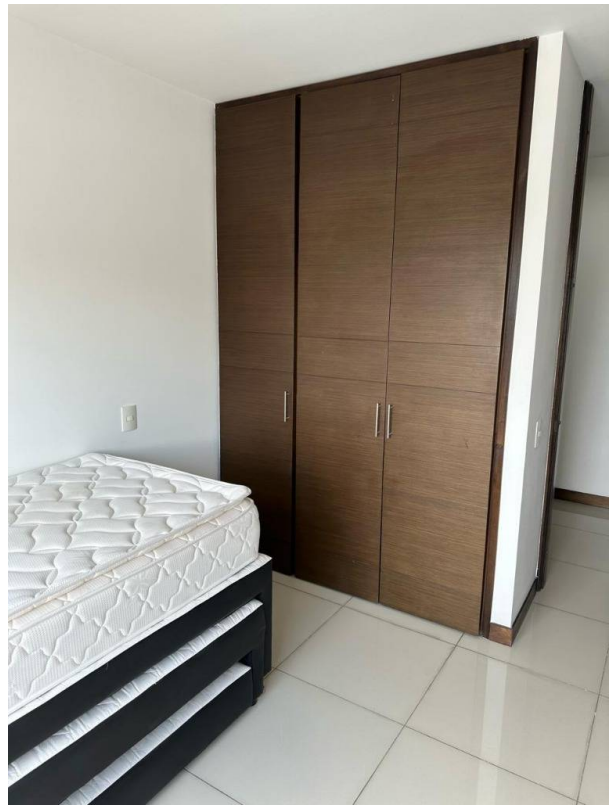


Photo Catalog









Calle 9 # 44 - 104 Local 06,Camino Real, Cali, Valle del Cauca
T 6028912797 | contacto@c21elite.com.co | www.c21elite.com.co

Property subject to availability.

Price subject to change without notice.

The sending of this file does not commit the parties to the subscription of any legal document. The information and measurements are approximate and must be confirmed with the relevant documentation.