



**William Delvalle  
Ortiz**

**CENTURY 21.**

Radial

**ID: 131439  
wdelvalle@century21radial.com  
+573108926737**



**Condominium for Rent**

**El Poblado, Medellín, Antioquia**



**Rent: \$7,500,000.00**

**Maintenance : \$735,000**

**Property type: Condominium**

**Operation: Rent**

- **Stratum:** 6
- **Land:** 115.0 sqm
- **Building:** 115.0 sqm
- **Bedrooms:** 3
- **Bathrooms:** 3
- **Half Baths:** 1
- **Parking lots:** 2
- **Stories:** 1
- **Kitchen:** Full kitchen
- **Condition:** Excellent
- **Building Classification:** Moderno
- **Number of Elevators:** 2
- **Floor number:** 21
- **Number Of Houses:** 120
- **Construction Quality:** Luxury
- **Showers:** 3
- **Floor Type:** Porcelanato
- **environments:** 3

- |                   |                        |                     |                            |
|-------------------|------------------------|---------------------|----------------------------|
| • Pool            | • Pets Allowed         | • Disabled access   | • Hot water                |
| • Fire alarm      | • Elevator             | • Balcony           | • Bar                      |
| • Warehouse       | • Surveillance cameras | • Closed circuit TV | • Automatic Access Control |
| • Deposit         | • Smoke detector       | • Fire detector     | • Electric stove           |
| • Gym             | • Electric oven        | • Jacuzzi           | • Childish games           |
| • Covered parking | • Visitors Parking     | • Manual blinds     | • Climatized pool          |

- Goal
- Sauna
- Multiple court
- Integral kitchen
- Business office
- Study Room
- Cytophone
- Country Zone
- Trans. Close public
- Exterior parking bay
- Goal / Surveillance
- Garage
- In residential area
- Urban area
- Emergency stairs
- Trash Shut
- Parking bays
- Comfortable access routes
- Underground Parking
- 360 panoramic
- Automatic door
- Surveillance Service
- Squash court
- Playroom
- Internet room
- Hall of Alcoves
- American kitchen
- Shopping area
- Nearby parks
- Water tanks
- Near Urban Zone
- Public services
- Outside Shopping Center
- Close to commercial sector
- Fire Cabinet
- Internal parking
- 24 \* 7 private surveillanc center
- Close to shopping center
- Level Parking
- Security door
- basement
- In a closed set
- Parkland
- Power plant
- Panoramic view
- Installation of gas
- Residential area
- Supermarkets / C.Ciales
- Pantry
- Native forest
- Closet
- On secondary road
- All the services
- Covered Garage
- Network Cabling
- Wood Floor
- High resistance floor
- Grill
- Sewerage
- Independent services
- Outdoor gardens
- Social room
- BBQ terrace
- Courtyard
- Garaje(s)
- Auxiliary bathroom
- American style bar
- Laundry area
- Colleges / Universities
- 24x7 surveillance
- Paved Access
- Irrigation system
- In commercial area
- Internet service
- Natural ventilation
- Conference Room
- Dinning Room
- Water sprinklers
- Clearance height
- Restaurants
- Wi fi availability
- Pan one side
- Security fence

### Property status

State: Excellent

Age: 2021

Without Mortgage: Yes

### Description

Rent Apartment in Balsos Poblado, Santa Fe Shopping Center Sector, apartment with an area of 115m2, with a modern architectural design conceived for those who prefer a quiet life in classy spaces, with 3 bedrooms, 3 bathrooms + social bathroom, study, dining room open kitchen and balcony integrated into one environment, with a spectacular view, AA in social area, and main bedroom, porcelain and wood floor, double linear parking, useful room, this unit with a privileged location and designed for people who wish to live in apartments with avant-garde design and spaces full of charm. With the best common areas in the sector Swimming pools, gym, social room, play room, car lobby, billiards, Turkish, sauna, TV room, 24/7 concierge. It has excellent access roads close to El Poblado Avenue, Loma de los Balsos, shopping centers such as Oviedo, Santafé and El Tesoro, clinics, universities and schools, it is made up of two towers with 60 apartments each, the most modern of sector. Contact us to schedule the visit, we offer you the best experience.

**Location**

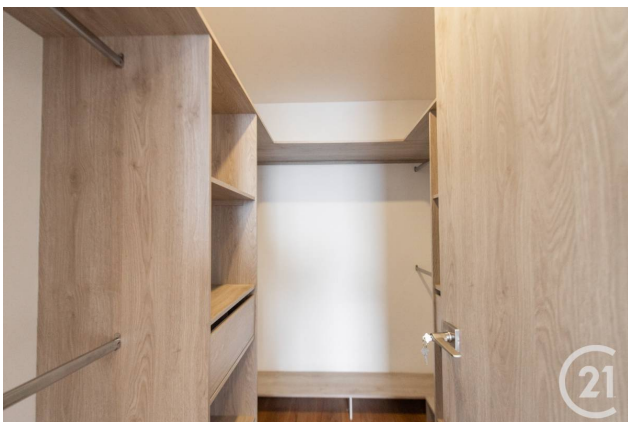
El Poblado, Medellín, Antioquia

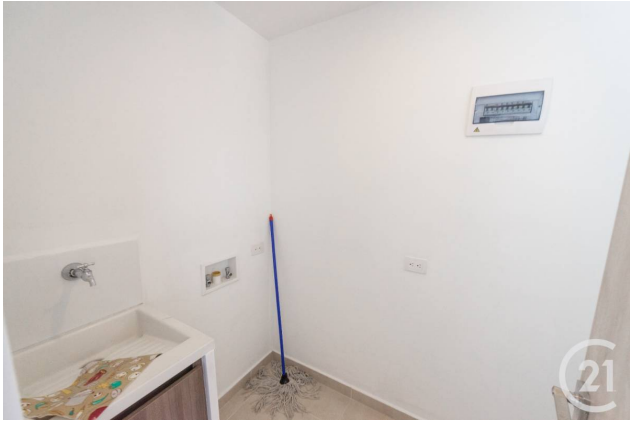
**References**



**Photo Catalog**









**Calle 20 Sur # 27-55, Medellín, Medellín, Antioquia**  
**T 6045898666 | [gerencia@century21radial.com](mailto:gerencia@century21radial.com) | [www.century21radial.com](http://www.century21radial.com)**

Property subject to availability.

Price subject to change without notice.

The sending of this file does not commit the parties to the subscription of any legal document. The information and measurements are approximate and must be confirmed with the relevant documentation.